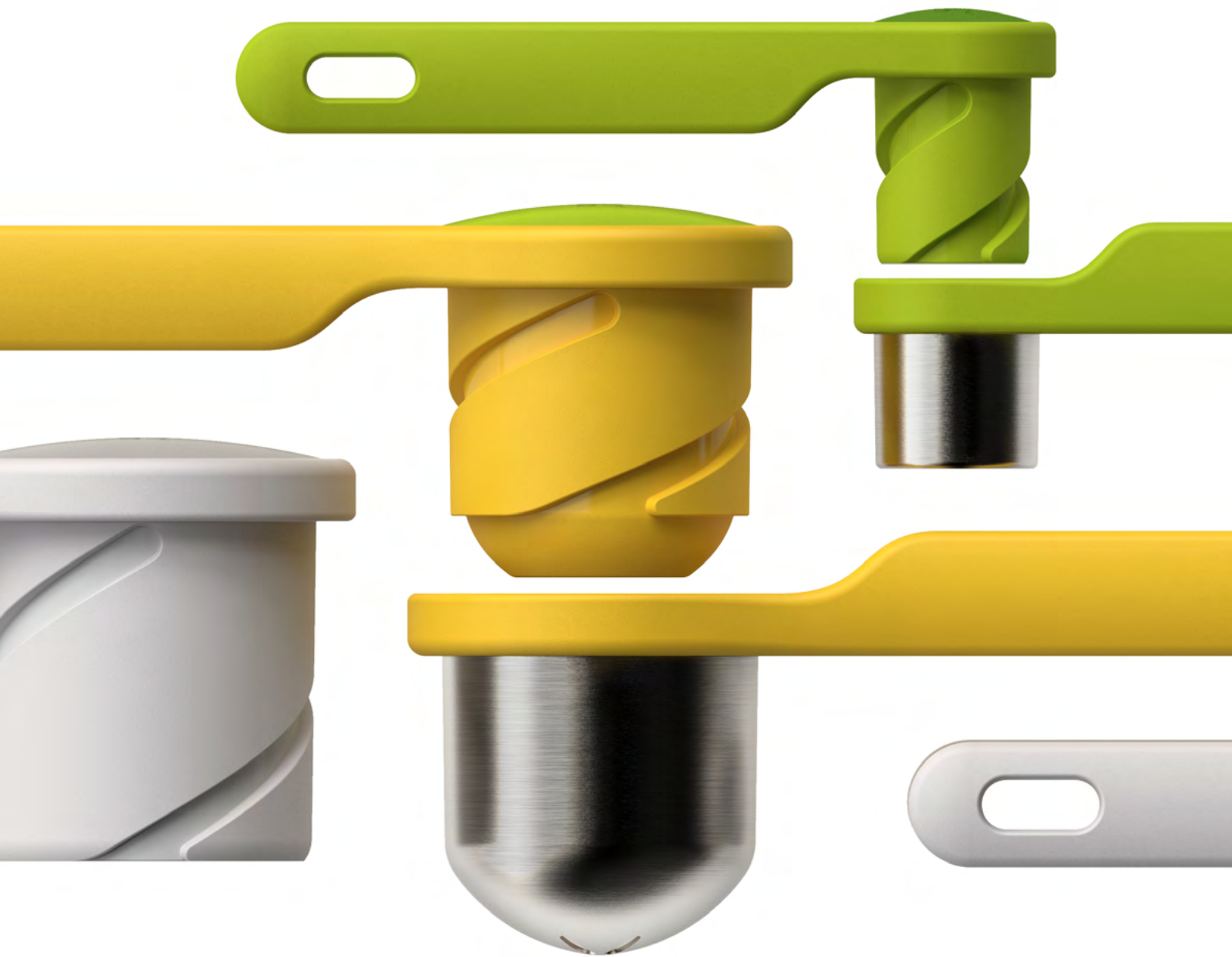


Joseph[®]
Joseph

Product Collection
Spring 2017



GADGETS



Helix Ergonomic food presses

Design registered

Most hand-held juicers and presses require strong hands to operate and their vertical squeezing action can often be awkward to use. With the Helix range, however, the squeezing force is applied horizontally, which is much more comfortable and utilises the power of the shoulders as well. In addition, the unique, twisting mechanism multiplies the force used, which means you

get more squeezing power from less effort. The 2-piece design is made from stainless steel and nylon and can be separated for easy cleaning. The Helix range includes a garlic press, potato ricer and citrus juicer.

Dishwasher safe.



Helix Potato Ricer - perfect for mashing a variety of cooked vegetables



Unique twisting action makes crushing easier



Easy-clean 2-piece design



Helix Garlic Press - crushes multiple cloves at once

Helix Citrus Juicer - ideal for squeezing lemons and limes



Helix Potato Ricer
(20100)

Dimensions
26.5 x 9.4 x 9.1 cm
(10½ x 3¾ x 3½ inches)



Helix Citrus Juicer
(20101)

24.5 x 8.5 x 9.8 cm
(9½ x 3¼ x 4 inches)



Helix Garlic Press
(20102)

17.6 x 4.6 x 5.8 cm
(7 x 1¾ x 2¼ inches)



Spiro™ 3-in-1 hand-held spiralizer

Design registered

Many spiralizers can be fiddly to use and they often create piles of messy noodles. Spiro™, however, makes spiralizing super neat and easy with its clever, compact design. It comes with two styles of spiralizing blade – coarse and fine – for different noodle thicknesses, plus a handy grating blade. It features a soft-grip lid, for easy turning, and two guide arms that help keep food straight as you twist.

Most importantly, it has a clear base that collects food as you cut – keeping everything nicely contained and your worktop cleaner. After use, the three blades and the lid store neatly together with the base for compact storage.

Dishwasher safe.

Coarse Blade



Fine Blade



Grating Blade



Container base collects food as you cut



Interchangeable blades



Soft-grip handle and food grip



Spiro™
(20105)

Dimensions 7.8 x 7.8 x 16 cm (3 x 3 x 6¼ inches)



Spiro™ cardboard
countertop unit
Holds 8
(product not included)
37 x 34 x 40 cm
(14½ x 13½ x 15¾ inches)
(99214)



Handi-Grate™ 2-in-1 mini grater and slicer

Design by Goodwin Hartshorn. Design registered.

This beautifully compact mandoline has razor sharp stainless-steel blades, set either side of its design, for grating and slicing small foods such as garlic, ginger and mini vegetables. The design features an ergonomic handle, a non-slip tip and a sliding finger-guard on one side for added safety when slicing. It also comes with its own protective sheath for safe storage.

Dishwasher safe.



Grating blade



Slicing blade with finger guard



Loading finger guard



Protective sheath



Handi-Grate™
(20048)



Dimensions 28.5 x 5.7 x 4.5 cm (11¼ x 2¼ x 1¾ inches)



Zesting blade



Blade wiper on reverse



Wiper detaches for cleaning



Protective sheath



Handi-Zest™
(20049)



Dimensions 28 x 5 x 2 cm (11 x 2 x ¾ inches)

Handi-Zest™ Mini zester with integrated blade wiper

Design by Goodwin Hartshorn. Design registered.

One of the problems with conventional zesters is that it can be tricky removing all that precious zest from their blades after grating. Handi-Zest, however, comes with its own mini blade wiper that neatly collects any remaining zest from the back of the blade. Using the wiper, simply slide the zest along the length of the blade to the hole at the end where it can be easily removed. The design comes with its own protective sheath for safe storage.

Dishwasher safe.



Prism™

4-in-1 box grater with storage container base & lid

Design registered

This neat box grater combines four types of grating blade into its pyramid-shaped design and comes with a base for collecting grated food and a lid for storage. The sharp stainless-steel blades are perfect for grating a variety of foods such as cheese, vegetables and whole spices or even zesting citrus fruits.

The handy, snap-on lid means that any unused grated food can be conveniently stored in the container for another time and, after use, the entire blade section can be flipped over and placed inside the container for extra-safe storage.

Dishwasher safe

Dimensions 15.5 x 19 x 5.5 cm (6 x 7½ x 2 inches)



Perfect for storing unused grated food in fridge



Includes storage container base with lid



Blades store safely inside container after use



Conveniently grate straight into container



Coarse



Fine



Extra fine



Star



Prism™ (20104)



Slicing blade ideal for medium cheese such as cheddar and emmental



Shaving blade ideal for hard cheese such as parmesan



Embossed surface prevents slices sticking



NEW

Multi-slice™
(20106)

Multi-slice™

Multi-function cheese plane

Design registered

This stylish cheese plane incorporates two handy blades in one useful tool. The main blade is perfect for slicing medium cheese - such as cheddar and emmental - and features an embossed surface to prevent slices sticking. The secondary blade is much finer and therefore ideal for shaving hard cheese such as parmesan. The design also features an ergonomic, easy-grip handle.

Dishwasher safe.



Dimensions 7.3 x 16.5 x 3 cm (3 x 6½ x 1¼ inches)

Twist Grater™

2-in-1 etched grater with adjustable handle

Design registered

This versatile grater has been designed to adapt to different grating tasks and foods with ease. Firstly, it has two different styles of etched stainless-steel blade set either side of its grating surface. Secondly, its handle has two different grating positions for maximum convenience.

With the handle locked in the straight position, it's ideal for grating directly over plates and dishes. But when you twist and lock the handle 90° it creates a naturally sturdy shape for resting on the worktop, providing more support when grating larger quantities of food.

It comes with a reversible plastic sheath that protects the blades when stored but can be flipped to allow you to collect and measure grated food. Available in three colours and blade configurations - Coarse & Fine, Extra Coarse & Ribbon and Star & Extra Fine.

Dishwasher safe.



Straighten handle for grating over food



Grate and measure into sheath



Rotate and lock handle to grate larger quantities



Push button



Twist handle



Lock



Twist Grater™ -
Extra Coarse & Ribbon
(20016)



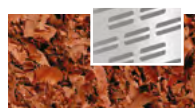
Twist Grater™ -
Coarse & Fine
(20017)



Twist Grater™ -
Star & Extra Fine
(20034)



Extra Coarse



Ribbon



Coarse



Fine



Star



Extra fine

Dimensions 10.5 x 29.5 x 2.8 cm (4 x 11½ x 1 inches)

Multi-peel™ Multi-function peelers

Designed by Goodwin Hartshorn
Design registered

Multi-peel™ is a comprehensive range of four highly-effective peelers. Each tool has a high quality stainless-steel blade, multiple added functions and ergonomic, easy-grip handles. The range includes two different straight-bladed peelers for everyday use, a serrated peeler for soft skinned fruit or vegetables and a julienne peeler for more specialised requirements.

So whether you need the perfect blade for preparing potatoes or one for adding the final flourish to culinary masterpieces, the ideal tool is in your hands. All peelers come with a protective blade guard.

Dishwasher safe.



Tough scraping blade and potato-eye remover



Tough scraping blade and potato-eye remover



Channel knife



Citrus zester and cutting tool



Y-shaped Peeler
8.5 x 13.5 x 2.2 cm
(3¼ x 5¼ x ¾ inches)
(10107)



Serrated Peeler
3.5 x 17.2 x 1.4 cm
(1¼ x 6¾ x ½ inches)
(10109)



Straight Peeler
3.5 x 17.2 x 1.4 cm
(1¼ x 6¾ x ½ inches)
(10108)



Y-shaped Julienne Peeler
7.7 x 13 x 2.2 cm
(3 x 5 x ¾ inches)
(10110)



Multi-peel™
Set of 3 peelers
Y-shaped Julienne Peeler
Serrated Peeler
Straight Peeler
28.5 x 16.5 x 2.5 cm
(11¼ x 6½ x 1 inches)
(10111) USA only



Rotary Peeler™

Compact triple-bladed peeler

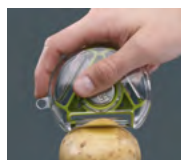
Designed by Damian Evans
Design registered

Eliminate the need for several different vegetable peelers with this compact design, which incorporates three essential styles of blade all in one unit.

Rotary Peeler makes short work of even the toughest fruit or vegetable skin and the design also includes a handy potato-eye remover.

Made from high-quality stainless-steel, its three blades are razor sharp and are housed in a tough, plastic, circular case. Simply select the desired blade - standard, serrated or julienne - by rotating the unit's brushed metal hub, until the desired blade is fully exposed.

The case can be opened for easy cleaning and the entire unit is dishwasher safe.



Standard blade



Julienne blade



Serrated blade



Potato-eye remover



Select blade by rotating hub



Rotary Peeler™ - Pink
(PEBR0100CB)



Rotary Peeler™ - Green
(PEBG0100CB)

Dimensions 10 x 8 x 2 cm (4 x 3 x ¾ inches)

Disc

Easy-clean pizza wheel

Design registered

This handy kitchen gadget allows you to divide up pizzas, pastries and sandwiches effortlessly with its circular stainless-steel blade. The ergonomic design includes a clever non-slip silicone palm grip that can be reversed to create a handy blade guard for safe storage. But best of all, when it comes to clearing up, the blade simply pulls out from the case, making it very easy to clean. Dishwasher safe.



Removeable blade



Non-slip silicone grip



Silicone grip reverses to become blade guard



Stores safely in a drawer



Disc
(20038)

Dimensions 12 x 10.5 x 1.8 cm (4¾ x 4 x ¾ inches)





Automatically grips can edge as you twist



Easy-twist mechanism with lid-release button



Integrated ring-pull hook

Can-Do Plus

Can opener with integrated ring-pull hook

Design registered

Can-Do Plus is a clever, compact opener that makes opening most types of can quick and easy. It has a large, easy-twist mechanism that locks itself on to the lid as you start to twist and an easy-release button for disposing of the lid after removal. It features a single, smooth handle for extra support and has an integrated hook at the end for prising up the metal rings on ring-pulls cans.

Suitable for left or right-handed operation. Wipe clean with a damp cloth.



CanDo Plus
(20098)

Dimensions: 6 x 18 x 5 cm (2¼ x 7 x 2 inches)

Can-Do

Compact can opener

Design by Mark Sanders
Design registered

Clever and compact, with an easy-twist handle, this pocket-sized device does away with the cumbersome handles and magnets of other can openers. With the first twist Can-Do attaches itself to the can lid and locks into place, allowing you to open it using the easy-twist mechanism. It works equally well if you're left or right handed and the lid is released with a simple press of the button on the front.

Wipe clean with a damp cloth.



Dimensions: 6 x 6.5 x 4.5 cm (2¼ x 2½ x 2 inches)



Twist mechanism to attach and start cutting



Push button to release lid



Compact design

Rocker™ Garlic crusher

Designed by Goodwin Hartshorn
Design registered



By using downward pressure and a 'rocking' motion, this stylish tool breaks up garlic cloves quickly and easily, forcing the pieces up through the array of small holes in its base. The crushed pieces are then held in the curved design, allowing them to be spooned or scraped conveniently into a pan or bowl.

Additional cloves can also be crushed at this stage before emptying. Rocker™ is easy to clean under running water but is also dishwasher safe.

Available in a range of colours or in brushed metal.



To crush, rock back and forth over clove pressing firmly



Scoop into pan



Easy to clean and dishwasher safe



Rocker™ - Black
(20061)



Rocker™ - Green
(20062)



Rocker™ - Brushed metal
(20065)
(GARL0100CB) USA only

Dimensions 18.5 x 4 x 3 cm (7¼ x 1½ x ¾ inches)

Scroll™ Silicone garlic peeler

Designed by Griffik
Design registered

Peel garlic quickly and easily with this simple, elegant design. Simply insert whole cloves into the centre of the roll, place down on to the work surface and then roll several times backwards and forwards with the palm of your hand. The polished silicone surface inside quickly removes the garlic skin leaving perfectly skinned cloves ready for chopping or crushing.

Unlike other silicone garlic peelers, Scroll™ can be completely unrolled which makes filling, emptying and cleaning much easier.

Dishwasher safe.



Roll to peel garlic cloves



Unrolls to fill and empty



Easy to clean



Scroll™ - Green
(20040)
(20059) USA only



Scroll™ - Grey
(20045)
(20070) USA only



Scroll™ - Red
(20057)
(20058) USA only



Dimensions 28 x 5 x 2 cm (11 x 2 x ¾ inches)

Shred-Line™ Stainless-steel garlic and ginger grater

Designed by Griffik
Design registered

Make authentic homemade garlic or ginger paste quickly and easily with this neat kitchen tool. Its sharp, double-action cutting teeth make short work of cloves and fibrous ginger roots and its smooth surface makes removing the pulp easy. Its versatile design means it can also be used for grating nutmeg and other whole spices.

As it's made from stainless steel, Shred-Line™ can also help remove garlic odour from fingers when washing by hand.

Dishwasher safe.



Makes garlic and ginger paste fast



Add straight to a pan



Shred-Line™
(20039)



Dimensions 11.8 x 5.7 x 1.2 cm (4¾ x 2¼ x ½ inches)

Clean-Press

2-piece easy-clean garlic press

Designed by Goodwin Hartshorn
Design registered



Dimensions 3 x 19.3 x 4 cm (1 x 7½ x 1½ inches)

The unique, 2-piece design of this garlic press makes the task of crushing garlic cloves much easier and less messy. Like a conventional garlic press, whole cloves are forced through a pierced extruder plate by squeezing the two levers together. Unlike conventional presses the two levers can then be separated enabling the top one to be used as a handy scraping tool for removing crushed garlic from the front of



Easy to crush



Easy to remove skin with tool tip

the extruder plate. The remaining skin or pulp can then be removed with the tip of the lever from the extruding chamber. The unit can be washed under running water where its cone-shaped holes prevent any remaining garlic pieces from being trapped.

Dishwasher safe.



Easy to remove garlic with tool edge



Easy to clean

Milly™

Mess-free salt & pepper mill

Designed by Morph
Design registered



Simply twist base to grind

Styled to look like a salt & pepper shaker, this playful design turns the conventional salt & pepper mill on its head – literally.

To use, simply invert the unit and twist the base to grind. The extra-large holes in the cap allow the grounds to fall out, but when the unit is placed down, the cap helps capture and contain any excess salt or pepper.



Removable cap catches excess grounds



Adjustable ceramic mechanism

A clear acrylic window in the body means you can see exactly what the contents are and when they are running low, and the unit is easy to fill and clean. Its tough, ceramic mechanism is also fully adjustable to grind from fine to coarse grain.

Wipe clean with a damp cloth.



Remove base to fill

Milly™ Set of two
- Black/White
(70061)



Dimensions 13 x 5 x 5 cm (5 x 2 x 2 inches)

Gusto

Flavour infusing spoon with herb stripper

Design registered

Adding extra flavour to soups, stews and casseroles is now even easier with this handy kitchen utensil. Load the bowl with fresh herbs or whole spices, close the lid and simply stir the flavours in as you cook.

Ideal for recipes using whole spices such as cinnamon sticks, dried chillies and cardamom pods that need to be removed before eating. Gusto is also perfect for flavouring pitchers of hot and cold drinks with herbs and spices. Suitable for all types of cookware.

Dishwasher safe.



Ideal for soups, stews and casseroles



Load bowl with herbs and spices



Integrated herb stripper



Gusto
(20075)

Dimensions
27 x 6.5 x 3.5 cm (10½ x 2½ x 1¼ inches)



Handles fold to create blade guard



Unique easy-chopping action



Safe and compact when folded

Dimensions
Folded 18 x 5 x 2 cm (7 x 2 x ¾ inches)
Open 18 x 13 x 2 cm (7 x 5 x ¾ inches)

Mezzaluna
(10079)



Mezzaluna

Folding herb chopper with integrated blade guard

Designed by Goodwin Hartshorn
Design registered

Taking its name from the Italian word for 'half moon', this traditional utensil for chopping herbs is updated with a design that is both safer and more compact than the original. It has pivoting handles and a sharp stainless-steel blade that slices through fresh herbs and garlic with ease.

After use the handles can be folded back over the blade making it perfect for storing in a drawer.

Wash and dry by hand.



Flavouriser™ 4-in-1 tenderising and flavouring tool

Designed by Goodwin Hartshorn
Design registered

This handy tool, with its four functions, is all you need to cook a delicious, tender piece of meat. Flavouriser™ features two different surfaces for either tenderising or flattening meat, a pestle end for grinding spices for rubs and a citrus reamer for making marinades.

Perfect throughout the year, it will really come in handy during the summer BBQ season.

Dishwasher safe.



Textured face for tenderising



Smooth face for flattening



Citrus reamer end for juicing



Pestle top for grinding



Flavouriser™
(20019)



Dimensions
6.2 x 24 x 4.6 cm (2½ x 9½ x 1¾ inches)



ThermoBaste™ 3-piece roasting and basting set

Design registered

Make succulent roasted meats with the help of this compact 3-piece set. The large baster helps you ensure that meat remains tender and evenly cooked, whilst the leave-in meat thermometer provides a clear visual guide to the perfect cooking temperature.

The third part of this set is a handy cleaning brush, which along with the thermometer, fits neatly inside the baster to maximise on storage space.

Baster and Brush - dishwasher safe
Thermometer - wipe clean with a damp cloth.



Includes its own cleaning brush



Dismantles for easy cleaning



Thermometer and cleaning brush fit inside baster for compact storage



ThermoBaste™
(10123)

Dimensions
6 x 6 x 30 cm (2¼ x 2¼ 11¾ inches)



FlavourBud™ Marinade injection tool

Design by Griffik. Design registered

Ensure moist, flavoursome meat and poultry with this handy preparation tool. It comprises a hollow stainless-steel nozzle that is attached to a soft silicone bulb. Simply squeeze the bulb to fill with marinades before injecting them deep into the centre of your favourite meat.

After use, the nozzle can be removed for easy cleaning and then reversed so that it stores safely inside the bulb.

Dishwasher safe.



Infuse flavour into meat and poultry



Squeeze to fill with marinades



Nozzle stores safely inside bulb after use



Compact when stored



FlavourBud™
(20035)

Dimensions 13 x 5 x 4.5 cm (5¼ x 2 x 1¾ inches)

Scoop™ Ricer

Potato ricer

Design by Goodwin Hartshorn
Design registered

For smooth mashed potato with minimum mess, this stylish design takes some beating. Unlike other ricers, you can scoop boiled potatoes straight from a hot pan with the bottom handle, draining any excess water off as you go. Then, with the top handle inserted, simply press the two handles together forcing potato through the stainless-steel extruder plate to create perfect, lump-free mash. When complete, the two-piece design separates for easy cleaning.

Dishwasher safe.



Scoop straight from a hot pan



Squeeze handles for lump free mash



Easy to clean



Dimensions: 31 x 10 x 18 cm (12¼ x 4 x 7 inches)



Mash right up to the pan edge



More compact when stored

Delta

Ergonomic folding masher

Design registered

Conventional mashers can be awkward to store due to their long handle and mashing head that are fixed at right angles to each other. Delta solves this problem as the head can be neatly folded flat after use. Before using, simply lock the mashing head in position with the small sliding collar located on the shaft. After use, slide the collar back up the shaft and secure it at the base of the handle.

As well as being easier to store, Delta is also more efficient to use. Its curved mashing plate is designed to fit better into the edges of a pan, which means more potato is squashed with each plunge of the masher. Suitable for non-stick cookware.

Dishwasher safe.

Dimensions

Folded: 10 x 10 x 30.5 cm (4 x 4 x 12 inches)



Delta
(20095)



Slide collar along shaft to lock mashing head



Twist™ 2-in-1 silicone whisk

Design registered



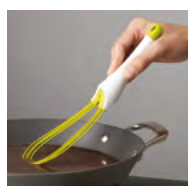
reddot design award
winner 2012

This innovative product incorporates two essential whisks in one stylish design.

As a flat whisk, Twist™ is ideal for mixing sauces in low pans or for making gravy in roasting trays. Its silicone-coated steel wires are suitable for non-stick cookware and are perfect for combining ingredients together, preventing them from burning on the bottom of a pan.

With a simple turn of the handle, Twist™ also becomes a highly effective balloon whisk, allowing egg whites to be whipped into perfect peaks. Twist™ can be easily dismantled for cleaning and, after use, can be closed flat for convenient storage in a drawer. Its silicone-coated wires are heat-resistant up to 270°C/520°F.

Dishwasher safe.



Flat whisk for blending



Balloon whisk for whipping



Dismantles for easy cleaning



Twist™ - Green/White
(20071)



Twist™ - Multi-colour
(20073)

Dimensions

Closed 29.5 x 8 x 4 cm (11½ x 3 x 1½ inches)
Open 29.5 x 8 x 7 cm (11½ x 3 x 2¾ inches)

Stretch™ Expandable silicone pot stand

Design registered

Most conventional pot stands only provide enough space for standing a single hot pan or dish on, meaning additional stands are required if serving food from a variety of hot containers. The unique design of Stretch™ helps eliminate this problem, as its size can be easily adjusted to provide space for more than one pan, or even a large casserole dish.

After use, it folds neatly away for convenient storage. Made from a high-quality silicone-nylon composite, it is heat-resistant up to 240°C/464°F.

Dishwasher safe.



Stretch™ - Green
(70031)



Stretch™ - Black
(70033)

Stretch™ countertop merchandiser

Contains 12 units
(6 Green, 6 Black)
Disposable
20 x 20 x 14 cm
(7¾ x 7¾ x 5½ inches)
(70036)



Dimensions Closed 29.5 x 8 x 4 cm (11½ x 3 x 1½ inches) Open 29.5 x 8 x 7 cm (11½ x 3 x 2¾ inches)

Dimple™ Non-drip ice-cream scoop

Design by Griffik
Design registered

Create less mess when serving ice cream with this thoughtfully designed scoop. Firstly, it has a plated zinc-alloy head with a faceted surface which helps release scooped ice cream more easily. Secondly, the tip of its weighted handle is flat which means it can be stored upright between scoops, rather than placed down on the worktop or stuck into tubs.

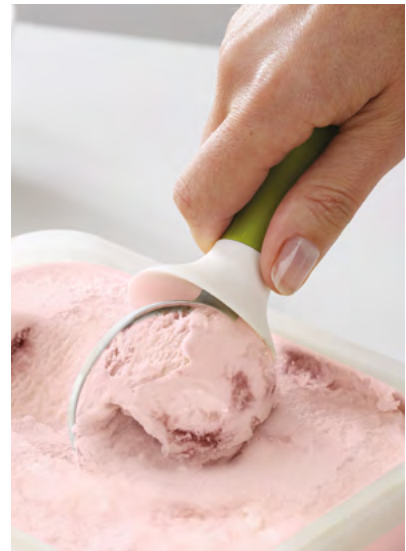
Lastly, it has a flexible silicone collar that catches any melted ice cream and drips before they run down the handle, leaving you free to enjoy your favourite dessert without sticky hands or worktops.

Dishwasher safe.

Dimensions 18 x 5 x 4.5 cm (7 x 2 x 1¾ inches)



Collar catches drips when stood upright



Easy-release scooping head



Dimple™
Green **(20046)**
Pink **(20047)**



Flexible cup catches pips

Catcher™ Citrus reamer with pip catcher

Design by Graeme Davies
Design registered

Ensure you get the whole juice and nothing but the juice with this innovative citrus reamer. With conventional hand reamers, the extracted liquid needs to be strained before use to remove any unwanted pips and fruit pulp. The design of Catcher™ helps eliminate this problem with its soft rubber cup underneath the reaming head, which catches any debris whilst allowing precious juice to drain through.

More comfortable to use than a horizontal hand juicer, Catcher™ is perfect for all kinds of citrus fruit.

Dishwasher safe.

Dimensions 16.5 x 8.5 x 7 cm (6½ x 3½ x 2¾ inches)

Catcher™
Grey **(REAM0100AS)**
Yellow **(20028)**



ENTERTAINING & BARWARE



BarWise™ Easy-action winding corkscrew

Design by Mark Sanders
Design registered

This easy-action winding corkscrew makes removing corks from bottles an absolute doddle. Simply push the corkscrew down onto the neck of the bottle, grip the sides of the tool and wind the handle to drive the screw into the cork. Continue winding and the cork is removed effortlessly, without the need to lever or pull it out like a conventional corkscrew. Its self-aligning design ensures perfect positioning every time and the non-stick coated thread glides easily into all types of cork. The design also includes twin foil cutters in the tips of its arms. Wipe clean with a damp cloth.



Twin foil cutters



Push down onto bottle



Squeeze arms and
wind handle



Wind in reverse to
release cork



BarWise™ Easy-action
winding corkscrew - Blue
(20080)



BarWise™ Easy-action
winding corkscrew - Grey
(20082) USA only

Dimensions 3 x 6 x 13.5 cm (1 x 2¼ x 5¼ inches) For packaging, see p.28

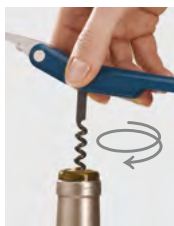
BarWise™ One-pull waiter's friend

Design by Mark Sanders. Design registered.

Waiter's friend corkscrews can be intimidating to use with their two-step action that needs to be reset halfway through. The unique, angled design of our BarWise™ waiter's friend, however, allows you to remove the cork faster in a single, smooth action. It has a non-stick coated screw thread that glides easily into corks, an integrated foil cutter and a magnetic bottle cap opener. Wipe clean with a damp cloth.



Foil cutter



Non-stick screw thread



Unique, angled design



Remove cork with
one pull



Magnetic bottle
cap opener



BarWise™ One-pull
waiter's friend - Blue
(20078)



BarWise™ One-pull
waiter's friend - Grey
(20079) USA only

Dimensions 1.7 x 3.5 x 14 cm (¾ x 1¼ x 5½ inches) For packaging, see p.28

BarWise™ Cap-collecting bottle opener

Design by Factorydesign
Design registered

When opening several capped bottles in one go, it can get messy with loose caps dropping onto the table and rolling onto the floor. This ingenious design solves this problem by capturing and collecting the caps as they are removed. After removing, the caps fall inside the body of the unit ready for disposal later through the hinged base. Great for parties and picnics. Holds up to 16 bottle caps. Wipe clean with a damp cloth.



Push down firmly
onto cap



Lever down to
remove cap



Caps collect inside



Open base and shake
to empty



BarWise™ Cap-collecting
bottle opener - Blue
(20089)



BarWise™ Cap-collecting
bottle opener - Grey
(20090) USA only

Dimensions 4.5 x 4.5 x 16 cm (1¾ x 1¾ x 6¼ inches) For packaging, see p.28

BarWise™ Any-way bottle opener

Design by Griffik
Design registered

This stylish bottle cap opener has a convenient, 360° stainless-steel opening edge that means you can prise off bottle caps from any angle. Once off, the caps are then held securely by the magnetic head, preventing them from dropping untidily onto the floor. Holds up to 4 bottle caps at a time. Dishwasher safe.



Convenient 360°
operation



Catches caps as
you open



Holds up to 4 caps



BarWise™ Any-way
bottle opener - Blue
(20083)



BarWise™ Any-way
bottle opener - Grey
(20088) USA only

Dimensions 3 x 3 x 12.5 cm (1 x 1 x 5 inches) For packaging, see p.28

BarWise™ 2-piece bottle opener set

Design registered

This great-value gift set includes an easy-action winding corkscrew and an any-way bottle opener from the BarWise™ range. See individual products for more details.



BarWise™ 2-piece
bottle opener set - Blue
(20091)



BarWise™ 2-piece
bottle opener set - Grey
(20092) USA only



The perfect set for opening a variety of corked and capped bottles

BarWise™ Packaging & merchandisers

All markets (except USA) – products are available in gift boxes with euro hooks and supplied in shelf-ready display cases (SRP) with multi-language header cards.



BarWise™ One-pull
waiter's friend - Blue
SRP pack size: 12
17 x 13.5 x 29.5 cm
(9½ x 5¼ x 11½ inches)
(20078)



BarWise™ Easy-action
winding corkscrew - Blue
SRP pack size: 12
24 x 17.5 x 29.5 cm
(9½ x 6¾ x 11½ inches)
(20080)



BarWise™ Any-way
bottle opener - Blue
SRP pack size: 12
22 x 14 x 29.5 cm
(8½ x 5½ x 11½ inches)
(20083)



BarWise™ Cap-collecting
bottle opener - Blue
SRP pack size: 8
21 x 15.5 x 29.5 cm
(8¼ x 6 x 11½ inches)
(20089)



BarWise™ 2-piece
bottle opener set - Blue
SRP pack size: 6
24 x 13.5 x 29.5 cm
(9½ x 5¼ x 11½ inches)
(20091)

USA market only – products are available on individual hanging cards.



BarWise™ One-pull
waiter's friend - Grey
(20079) USA only



BarWise™ Easy-action
winding corkscrew - Grey
(20082) USA only



BarWise™ Any-way
bottle opener - Grey
(20088) USA only



BarWise™ Cap-collecting
bottle opener - Grey
(20090) USA only



BarWise™ 2-piece
bottle opener set - Grey
(20092) USA only

Scoop&Pick™

2-piece jar spoon and fork set

Designed by Morph
Design registered

Serve up mess-free antipasti and olives with this handy utensil. The diminutive design is actually two tools in one. Firstly the long-handled slotted spoon ensures that you can scoop and drain from even the deepest jars. Secondly the integrated fork is perfect for skewering difficult to serve foods such as pickles or sun-dried tomatoes. Both tools clip neatly together when not in use to ensure easy storage.

Dishwasher safe.



Quick-draining spoon



Stainless-steel fork



Fork clips neatly into spoon

Dimensions 3 x 20 x 2.8 cm (1 x 7¾ x 1 inches)



Scoop&Pick™
(10105)



QuickSnap™ Plus

Easy-release ice-cube tray with stackable lid

Designed by Graeme Davies. Design registered.

Similar in style to a conventional ice tray, this innovative design has a unique switch mechanism, which holds the ice cubes securely in place until required. It also includes a flexible lid that enables you to

stack additional trays on top of one another in the freezer drawer, helping to prevent water spills and the ice cubes from tainting with any freezer odours.

Fill QuickSnap™ Plus with water just like a conventional ice tray. When ice is needed, simply twist the tray to loosen the cubes and then push each switch on the reverse, in the direction of the arrow, to release one ice cube at a time – effectively snapping

each out of its individual compartment.

With QuickSnap™ Plus you only release the amount of ice cubes you really need, whilst the rest remain securely in the tray and can be placed back in the freezer. Perfect for serving ice straight into drinks, without touching the cubes.

Dishwasher safe.



Push switch to release one cube at a time



Fill like a conventional ice tray



Fit lid and freeze



Twist tray to loosen cubes



Stackable design



QuickSnap™ Plus - White/Green
(20018)



QuickSnap™ Plus - White/Blue
(20020)



Dimensions 13 x 32.2 x 3.5 cm (5 x 12½ x 1¼ inches)

BAKING



Glaze

Refillable silicone pastry brush

Design registered

When glazing food before baking, it can be time consuming and messy having to keep dipping your pastry brush into a bowl of glaze mixture. This simple, clever design solves this problem as it has a squeezable, silicone base that can be filled with a variety of glazing liquids. Conveniently, this also allows it to stand upright between uses. It comes with two interchangeable heads – one for egg wash and one for sugar glaze or milk – and has flexible, silicone bristles which are hygienic, easy to clean and won't fall out into your food, unlike natural brush bristles.

Dishwasher safe.



Interchangeable heads



Non-dip brush creates less mess



Easy to fill



Glaze
(10150)

Dimensions 6.5 x 4 x 14 cm (2½ x 1½ x 5 inches)



Duo Bake™

2-in-1 preparation tool

Design by Morph

Design registered

Comprising two handy baking utensils in one compact design, this clever tool simplifies the task of dough preparation. Firstly a silicone bowl scraper allows you to get every last bit of mixture from the inside of the bowl. Then a stainless-steel dough cutter makes short work of slicing through your dough, with measurements etched on the blade edge to help you divide it up into evenly-sized pieces. When you're finished it also makes

the perfect tool for cleaning up your work surface too. Both tools attach neatly together magnetically for compact storage.

Dishwasher safe.



Stainless-steel dough cutter



Silicone bowl scraper



Measurements for even cutting



Duo Bake™
(40017)

Dimensions 14 x 13.5 x 1 cm (6¾ x 5½ x ½ inches)

Whiskle™

2-in-1 whisk with integrated bowl scraper

Design registered

This innovative stainless-steel whisk helps streamline a host of mixing tasks with its unique design, which incorporates a handy silicone bowl scraper. It allows you to make batters and cake mixes with ease and helps empty bowls in double-quick time. A neat, multi-function utensil you'll wonder how you did without.

Dishwasher safe.



Stainless-steel whisk



Scrape every last drop



Whiskle™
Blue (20094)
Green (20056)

Dimensions 30 x 8 x 7 cm



Handle removes for easy cleaning



Mix as you sieve



Dimensions

Small 35 x 14 x 6.5 cm (13¾ x 5½ x 2½ inches)
Large 41 x 20 x 7.5 cm (16 x 7¾ x 3 inches)

Shake-it™
Small (20050)
Large (20054)



Shake-it™

Self-tapping sieve

Design registered

This simple design makes sifting flour quick and easy with its single-handed operation. As you shake, the sieve handle gently rocks from side-to-side in your hand, stopping sharply as soon as it reaches its furthest point. This movement cleverly simulates the process of tapping the sieve with your other hand, causing the flour to fall. As some recipes benefit from flour being sifted and mixed at the same time, this ingenious design ensures one hand is free for stirring and folding as you sieve. Available in two sizes, it features a fine stainless-steel mesh and the handle can be removed for easy cleaning. Dishwasher safe.

Fin™

Silicone bowl scraper with integrated foot

Design registered

This flexible silicone bowl scraper is both useful and hygienic. Its curved form is perfectly shaped to fit the sides of mixing bowls and it has an integrated foot that allows it to be placed down during use, preventing the scraping edges and food touching your work surface. The design also includes a hanging hole for versatile storage. All in all, a great baking tool that reduces mess and improves hygiene. Dishwasher safe.



Store upright between uses



Shaped to fit the sides of mixing bowls



Fin™
(20076)

Dimensions
12.5 x 2.5 x 12 cm
(5 x 1 x 7 x 4¾ inches)

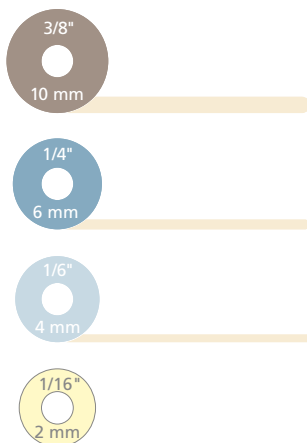


Adjustable Rolling Pin

Design by Damian Evans

This innovative rolling pin takes the guesswork out of preparing biscuit dough, pizza bases and pastry. It comes with four sets of removable discs that raise the rolling surface by different amounts, to create exactly the required pastry thickness – either 2 mm, 4 mm, 6 mm or 10 mm (1/16, 1/6, 1/4 and 3/8 inches).

Now available in a sophisticated new pastel colour palette, this ingenious device also ensures that pastry or dough is rolled to an even thickness throughout and to the exact size required, via measurements on the surface of the rolling pin. Discs - dishwasher safe. Rolling pin - hand wash only.



Simply unscrew ends to change discs



Adjustable Rolling Pin - Multi-colour
(20085)



Adjustable Rolling Pin - Pastel
(20036)

Dimensions 42 x 6.5 x 6.5 cm (16½ x 2½ x 2½ inches)

Roll-up™ Non-slip silicone pastry mat

Design registered

This large, silicone pastry mat provides a hygienic, non-slip surface for preparing all kinds of pastry and icing. It has a handy rolling size-guide printed on its surface and, unlike other pastry mats, an integrated, lockable strap that keeps the mat securely rolled when stored.

Dishwasher safe. Not suitable for oven use.



Roll-up™ - Green (20031)
Roll-up™ - Blue (20097)



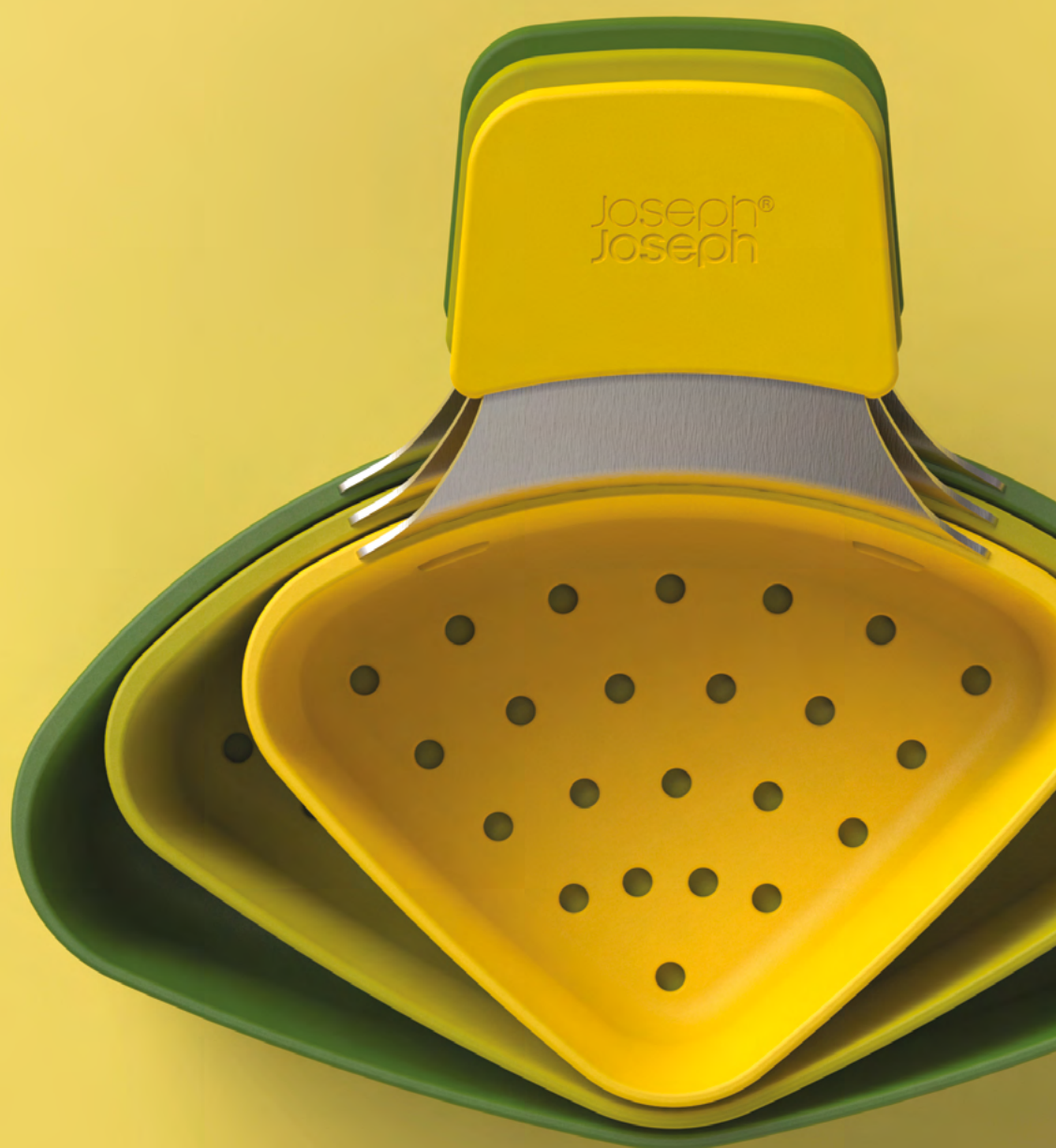
Lockable strap



Compact when stored

Dimensions Closed: 5 x 5 x 38 cm (2 x 2 x 15 inches) Open rolling area: 58 x 38 cm (23 x 15 inches)

FOOD PREPARATION



Nest™

Compact food preparation sets

Design by Morph
Design registered

Nest™ is the ultimate collection of practical, space-saving kitchenware comprising a unique range of food preparation sets. Their innovative design allows the individual elements within each set to be stacked together, thereby occupying the absolute minimum amount of space, wherever they are stored.

There are four different sets available with each item in a set having its own individual features. All sets come in stylish packaging and all items are dishwasher safe.

Nest™ 9 and Nest™ 7 sets include mixing bowls with a non-slip base and wide carry handles; the small mixing bowl includes metric and imperial measurements moulded inside for added convenience and a handy spout for mess-free pouring; the sieve has a fine stainless-steel mesh and the colander has large, easy-drain holes. All other elements stack and snap securely together.

**Nest™ 9 Plus**

1/6 Cup (5 ml/15 ml)

1/4 Cup (60 ml)

1/3 Cup (85 ml)

1/2 Cup (125 ml)

1 Cup (250 ml)

Small non-slip
mixing bowl with
measurements
0.5 LSieve
1.65 LColander
3 LLarge non-slip
mixing bowl
4.5 L**Nest™ 7 Plus**

1/6 Cup (5 ml/15 ml)

1/4 Cup (60 ml)

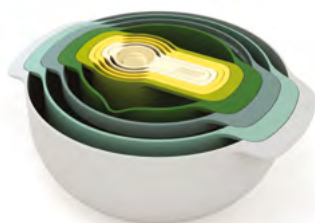
1/3 Cup (85 ml)

1/2 Cup (125 ml)

1 Cup (250 ml)

Small non-slip
mixing bowl with
measurements
0.5 LMedium non-slip
mixing bowl
1.65 L

Nest™ 7 Plus - Multi-colour
24 x 19 x 8 cm
(9½ x 7½ x 3 inches)
(40033)



Nest™ 9 Plus - Opal
32 x 27 x 14.5 cm
(12½ x 10½ x 5¾ inches)
(40076)
(40085) USA only



Nest™ 9 Plus - Multi-colour
32 x 27 x 14.5 cm
(12½ x 10½ x 5¾ inches)
(40031)
(40087) USA only



Nest™ Measure is a comprehensive measuring cup set featuring eight cup sizes that snap neatly together when not in use.



Wide range of cup sizes



Compact, space-saving design



Snap-together handles

Nest™ Measure

- ¼ tsp (1.25 ml)
- ½ tsp (2.5 ml)
- 1 tsp (5 ml)
- 1 tbs (15 ml)
- ¼ Cup (60 ml)
- ⅓ Cup (85 ml)
- ½ Cup (125 ml)
- 1 Cup (250 ml)



USA only



Nest™ Measure
8 x 9 x 18 cm (3 x 3.5 x 7 inches)
Multi-colour **(40019) (40016)** USA only
Opal **(40077) (40079)** USA only

Nest™ Mix

Egg separator

Small non-slip mixing bowl
1.4 L (1.5 qt)

Medium non-slip mixing bowl
2.4 L (2.5 qt)

Large non-slip mixing bowl
3.8 L (4 qt)



Nest™ Mix
31.5 x 25 x 13.5 cm
(12½ x 9¾ x 5¼ inches)
(40015)



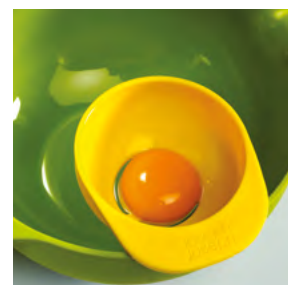
Additionally Nest™ Mix is a set designed specifically for baking. Each of its three mixing bowls has a stainless-steel egg-cracker and a pouring spout and it also includes an egg-separator that can be clipped on to the side of any bowl.



Bowls with non-slip bases



Integrated stainless-steel egg crackers



Egg-yolk separator

Nest™ Steam

3-piece steaming pod set

Design registered

Most small in-pan steamers only provide a single compartment for cooking food. This can be inconvenient, especially if different foods require different cooking times. Nest™ Steam, however, provides three individual pods that are ideal for small portions of vegetables and other foods. Each pod has a non-slip silicone handle and pan rests, and an integrated hook that suspends it safely from the edge of your pan. After use, the three pods stack neatly inside each other for compact storage.

Dishwasher safe.



Nest™ Steam
(40083)

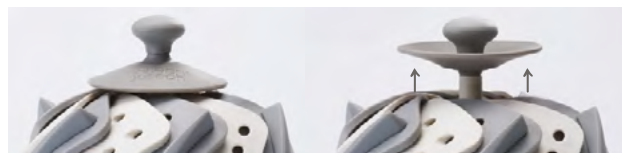


Steam different foods separately



Compact, space-saving design

Dimensions 13.5 x 15.5 x 8 cm (5¼ x 6 x 3 inches)



Lift finger guard



Pull leaves out to open

Lotus™ Plus

Non-scratch, folding steamer basket

Designed by Graeme Davies. Design registered.

The classic, stainless-steel steamer basket design is taken to new levels of practicality and convenience with this striking, contemporary version. Made from polypropylene, the unit has self-adjusting sides to fit a variety of pans (minimum diameter 16 cm/6¼ inches), heat-resistant side fins, silicone feet and an innovative silicone finger guard. It has a large capacity when fully open, but folds neatly away for storage.

The unit is non-scratch and suitable for use with both steel pans and non-stick cookware. Polypropylene parts heat-resistant up to 110°C/230°F; silicone parts up to 270°C/520°F.

Dishwasher safe.



Lotus™ Plus - Green (40023)

Lotus™ Plus - Grey (40024)

Dimensions Open 26 x 26 x 12.5 cm (10½ x 10½ x 5 inches)
Closed 14.5 x 14.5 x 12.5 cm (6 x 6 x 5 inches)

Square Colander

Design by Morph Design registered

This ergonomic colander has several unique features. Firstly, the single vertical handle ensures it remains upright and stable if placed in a sink and, when held, leaves one hand free for operating the tap. Secondly, its square corners make emptying rinsed food much easier and more precise. Lastly, its vertical drainage holes allow liquids to drain away quickly and efficiently and its square shape makes for efficient storage.

The Square Colander features a non-slip silicone handle and is available in two sizes to suit most kitchens.

Dishwasher safe.



Square, easy-pour corners



Upright and stable during use

Square Colander - Small
Green (40046)
Grey (40074)



Square Colander - Medium
Green (40056)
Grey (40073)
White (40058)
Black (40059)
Red (40060)



Dimensions Small 16 x 16 x 9 cm (6¼ x 6¼ x 3½ inches) Medium 21 x 21 x 11.5 cm (8½ x 8½ x 4½ inches)



Rinse



Drain



Mix



Serve

Prep&Serve™
Small - Green (40065)
Large - Green (40063)
Large - White (40064)



Dimensions Large 25 x 29 x 18 cm (9¾ x 9¾ x 7 inches) Small 19 x 21 x 13 cm (7½ x 8¼ x 5 inches)

Prep&Serve™ Multi-function bowl with integrated colander

Design registered

This simple, stylish product combines the functions of a preparation bowl, colander and a serving bowl in one convenient design. Its integrated colander means you can rinse food in the main bowl and then drain off the excess water, without having to tip the contents into a separate colander or sieve.

Once drained the contents can either be tipped into a pan for cooking, combined with other ingredients such as sauces and dressings, or served straight to the table – all using the same bowl. It's ideal for preparing and serving salads and soft fruits or for rinsing rice and lentils prior to cooking. Dishwasher safe.

TriScale™ Compact folding digital scale

Designed by Morph
Design registered



Gold Award

This unique digital scale brings a whole new meaning to the concept of space-saving kitchen gadgets. When open, its three arms provide a stable platform on which to place bowls and other items for weighing. When closed, the unit folds down to an extremely compact size, enclosing and protecting the screen and controls, which makes it perfect for storing in a kitchen drawer. It has an easy-to-read LCD display, touch-sensitive controls and an auto power-off feature.

A convenient 'add and weigh' function also allows multiple ingredients to be measured in the same bowl during recipe preparation. The scale weighs/measures in the following units: g, lbs oz, fl.oz and ml.

Powered by 1 x 3V CR2032 battery (included).



Add & Weigh function



Touch-sensitive buttons



Folds for convenient storage



TriScale™ - White
(40071)



TriScale™ - Green
(40072)



Dimensions Closed 4.5 x 14.9 x 2.1 cm (1¾ x 5¾ x ¾ inches) Open 21.9 x 20.2 x 2.1 cm (8½ x 8 x ¾ inches)

SwitchScale™ 2-in-1 digital scale with reversible lid

Designed by Morph
Design registered

This multi-functional digital scale is a versatile kitchen device which offers two options for weighing. You can either place items or bowls directly on to its top, or flip over the integrated lid to create a measuring bowl for weighing loose ingredients or liquids. Featuring an easy-to-read back-lit LCD display and touch-sensitive controls, it's ready to weigh both liquids and dry foods in the following units – gms, lbs, ozs, fl.ozs, mls up to a maximum capacity of 5kg/176.4 fl.oz/11lb/5000ml.

A convenient 'add and weigh' function allows multiple ingredients to be weighed during recipe preparation and an auto power-off feature maximises battery life. It also has non-slip silicone feet.

Bowl - hand wash. Scale - wipe clean with a damp cloth. Powered by 3 x AAA batteries (included). Internal mechanism 2-year guarantee.



Quickly weigh whole items by placing on lid



Flip lid to create bowl scale



SwitchScale™
(40054)



Dimensions 22.6 x 18.6 x 9 cm (8¾ x 7¼ x 3½ inches)

2-in-1 Measuring Jug

Measure large and small volumes

Design registered

This versatile, dual-chamber measuring jug can measure liquids from as little as 5 ml (1/6 cup), right up to 1 litre (4 cups). Its square corners and soft-grip handle aid pouring and it has clear, easy-to-read calibrations for precise measuring.

Available with metric/imperial measurements (cups, ml, fl.oz and pints). Dishwasher safe.



2-in-1 Measuring Jug - Green
(40067) Metric/Imperial measurements

Dimensions 16.5 x 16.5 x 14 cm (6½ x 6½ x 5½ inches)



Easy-pour corners



Small chamber measures from 5 ml (1/6 cup)



Folds flat for storage



Bookrests, page holders and back stand automatically fold out



CookBook™ Compact folding bookstand

Designed by Damian Evans with Bernard Sinclair
Design registered

The problem with most bookstands is their bulky size and awkward shape which takes up valuable space when not in use. The unique design of CookBook™ avoids this, as it opens and folds exactly like a book, which means it can be stored neatly on a bookshelf until required. When opened, the bookrests, page holders and back stand automatically fold out, providing solid, angled support for most sizes of book or even a tablet. A non-slip foot at the base of the spine keeps the unit safely in place on the work surface during use.

Wipe clean with a damp cloth.



Suitable for tablets



CookBook™ - Green/Dark Green
(40052)



CookBook™ - White/Grey
(40051)

Dimensions Open 38 x 21 x 21 cm (15 x 8¼ x 8¼ inches) Closed 26 x 20 x 2 cm (10¼ x 7¾ x ¾ inches)

STORAGE



Nest™ Glass Storage

Compact storage container set

Designed by Morph Design registered

Nest™ is the ultimate collection of practical, space-saving kitchenware comprising a unique range of food preparation and storage sets. Their innovative design allows the individual elements within each set to

be stacked together, thereby occupying the absolute minimum amount of space, when they're stored.

All the containers in this set are made from tough borosilicate glass, which means they're freezer, oven, microwave and dishwasher safe. The container sizes range from a handy ½ cup (130 ml) size, that's perfect for small portions of vegetables or sauces, right up to an extra-large 10½

cup (2.5 litre) container that's ideal for preparing and storing family-sized meals. Each coloured lid snaps tightly onto its corresponding container and features easy-pull tabs for opening. Best of all, when storing, the lids can be snapped neatly together, which means they're very easy to find when you need them.

Lids – top-rack dishwasher safe.
Containers – dishwasher safe.

Extra Large - 10.5 cup/2.5 L (84.5 fl oz)
28 x 21.5 x 8.4 cm (11 x 8½ x 3¼ in)

Large - 5.4 cup/1.3 L (44 fl oz)
22.8 x 17.5 x 7.3 cm (9 x 7 x 3 in)



Medium - 2.7 cup/550 ml (18.6 fl oz)
18 x 13.4 x 6.1 cm (7 x 5¼ x 2½ in)



Small - 0.55 cup/130 ml (4.3 fl oz)
12.7 x 9.3 x 4.8 cm (5 x 3½ x 2 in)

TOUGH BOROSILICATE GLASS



Freezer safe



Oven proof



Quickly access any size of container or lid



Compact storage solution



Easy-find snap-together lids



Nest™ Glass Storage
(81060)
(81064) USA only



Nest™ Glass Storage
cardboard countertop
merchandise
(stock not included)
25 x 36 x 23 cm
(99223)
(99234) USA only



Nest™ Storage

Compact storage container sets

Designed by Morph
Design registered

Nest™ Storage provides a colourful, space-saving solution to the problem of storing conventional storage containers, which take up precious cupboard space when not in use and require lids and bases to be stored separately. This clever design allows you to store multiple sizes of container in the same space as the largest.

Container bases nest neatly inside each other and lids snap conveniently together making them very easy to find. All sets feature airtight lids and clear colour coding for easy pairing.

All elements are freezer, microwave and dishwasher safe. BPA-free.



Space-saving design



Airtight lids



Colour-coded dots in each base



Easy-find snap-together lids



Set of 6

230 ml (8 oz)

540 ml (18 oz)

1.1 L (37 oz)

1.85 L (63 oz)

3 L (101 oz)

4.5 L (152 oz)



Nest™ Storage - Multi-colour
Set of 6 containers
26 x 20.5 x 13.5 cm
(10 x 8 x 5¼ inches)
(81005)
(81009) USA only



Nest™ Storage - Opal
Set of 6 containers
26 x 20.5 x 13.5 cm
(10 x 8 x 5¼ inches)
(81035)
(81046) USA only



Set of 3 tall

1 L (33.8 oz)

1.9 L (64 oz)

3.2 L (108 oz)



Nest™ Storage - Multi-colour
Set of 3 tall containers
13.5 x 18.5 x 20 cm
(5½ x 7¼ x 8 inches)
(81013)
(81020) USA only



Set of 4

230 ml (8 oz)

540 ml (18 oz)

1.1 L (37 oz)

1.85 L (63 oz)



Nest™ Storage - Multi-colour
Set of 4 containers
21 x 16 x 11 cm
(8 x 6¼ x 4¼ inches)
(81006)
(81010) USA only



USA only



USA only



USA only



USA only

Dial™ & Dial™ Baby

Stackable storage containers with datable lids

Design registered



reddot design award
winner 2016

In the UK and US, the average household throws away anywhere between 25-30% of the food and drink it purchases, mainly due to food spoilage*. Keeping track of 'Best Before' and 'Use by' dates is a tricky task and if there is any doubt about a food's condition, it is usually thrown out.

New Dial™ storage, however, offers the perfect solution. Each container in the range comes with a clever contra-rotating

dial in the lid, which allows you to clearly date the contents – either with a 'use by' or 'when stored' date. Simply turn the dial clockwise to set the month and anti-clockwise to set the day, with the date being visible in the clear window. Available in a range of shapes and sizes, these BPA-free containers are perfect for use in the fridge or freezer.

Date it. Don't waste it.



Bases: Dishwasher safe (top rack).
Freezer and microwave safe.
Lids: Hand washing recommended.
Top-rack dishwasher safe up to 50°C/122°F.
Freezer safe. Not microwave safe.



Ideal for the fridge or freezer



Rotate dial anti-clockwise to set day and clockwise to set month



Dial™
Rectangular 0.7 L (23.7 oz)
18.5 x 14 x 5 cm
(7¼ x 5½ x 2 inches)
(81036)



Dial™
Square 0.9 L (30.4 oz)
17 x 17 x 5 cm
(7¼ x 6¾ x 2 inches)
(81037)



Dial™
Rectangular 1 L (33.8 oz)
18.5 x 14 x 7 cm
(7¼ x 5½ x 2¾ inches)
(81038)



Dial™
Square 1.2 L (40.6 oz)
17 x 17 x 7 cm
(7¼ x 6¾ x 2¾ inches)
(81039)



Dial™
Rectangular 2.4 L (81.2 oz)
28 x 18.5 x 7 cm
(11 x 7¼ x 2¾ inches)
(81040)



Dial™ Set of 3
Rectangular
3 x 1 L (33.8 oz)
(81041)



Dial™ Baby
Stage 1 (6-9 months)
1 x 0.9 L (30.4 oz)
9 x 30 ml (1 oz) pots
17 x 17 x 5 cm
(7¼ x 6¾ x 2 inches)
(81043)



Dial™ Baby
Stage 2 (9-12 months)
1 x 0.9 L (30.4 oz)
4 x 90 ml (3 oz) pots
17 x 17 x 5 cm
(7¼ x 6¾ x 2 inches)
(81044)



Dial™ Set of 5
Rectangular
2 x 0.7 L (23.7 oz)
2 x 1 L (33.8 oz)
1 x 2.4 L (81.2 oz)
(81042)



Dial™ Baby
Stages 1 & 2
2 x 0.9 L (30.4 oz)
4 x 90 ml (1 oz) pots
9 x 30 ml (3 oz) pots
17 x 17 x 5 cm
(7¼ x 6¾ x 2 inches)
(81045)



Dial™ Baby storage containers make storing and serving food for babies safe and easy. Each set comprises a series of stackable, portion-sized pots with snap-shut lids that fit neatly inside a main container with a datable lid. Available in a range of sets for different weaning stages, these BPA-free containers are perfect for use in the fridge, freezer and microwave.

Main container base: Dishwasher safe (top rack). Freezer and microwave safe.

Main container lid: Hand washing recommended. Top-rack dishwasher safe up to 50°C/122°F. Freezer safe. Not microwave safe. Pots and lids: Dishwasher safe (top rack). Freezer and microwave safe.

GoEat™

Food on the go made easy

Design registered

GoEat™ is an innovative range of products that are designed to make eating homemade food on the go, easy and convenient. The range comprises a variety of lunch containers that are perfect for transporting sandwiches, salads, soups or snacks. After eating, each item then cleverly compacts down to save space in your bag for the journey home. The GoEat™ range also includes accessories such as a compact cutlery set for added convenience.



GoEat™ Salad Box
Green (81029)
Grey (81030)

GoEat™ space-saving salad box

This versatile salad box allows you to keep delicate salad leaves separate from other heavy or wet ingredients during their journey from home. It features a large base compartment for dry food, a smaller top compartment for wet food or snacks, a salad dressing pot and a silicone lid with a locking collar.

Compartment and lids - microwave and dishwasher safe.
Locking collar not microwave safe.



Dimensions 15 x 15 x 95 (69*) cm 6 x 6 x 3¾ (2¾*) inches *When compact **Capacity** Top 400 ml (13.5 oz), Base 700 ml (23.5 oz), Dressing pot 20 ml (6.75 oz)

GoEat™ space-saving soup pot

This innovative leak-proof design features a large base compartment that can hold your favourite soup plus a smaller top compartment that's perfect for accompaniments, such as bread or croutons. Both compartments are separated by a leak-proof silicone lid, which is held tightly in place with a locking collar. Once the contents are finished, the smaller compartment fits neatly inside the larger one in order to save space in your bag.

Capacity: 600 ml (20 oz) Compartment and lids - microwave and dishwasher safe. Locking collar not microwave safe.



GoEat™ Soup Pot
Green (81027)
Grey (81028)



Dimensions 11 x 11 x 17.5 (12*) cm 4¼ x 4¼ x 7 (4¾*) inches *When compact **Capacity** Top 300 ml (10 oz), Base 600 ml (20 oz)

GoEat™ space-saving cutlery set

Usually eating lunch on the go can require the use of disposable plastic utensils that aren't always up to the job. But this compact stainless-steel cutlery set means you don't need to compromise on quality over convenience when eating on the move. Consisting of a knife with a magnetic handle, a fork and a spoon, the set fits beautifully together and comes with its own silicone carry case to keep everything clean before and after use.

Dishwasher safe.

Dimensions 5 x 17 x 3 cm (2 x 6¾ x 1¼ inches)



GoEat™ Cutlery Set
Green (81033)
Grey (81034)



GoEat™ Lunch Box
Green (81031)
Grey (81032)

GoEat™ space-saving lunch box

This practical lunch box comprises a large base compartment for sandwiches and dry food, a top compartment with a divider for wet food or snacks and a silicone lid with a locking collar to keep it all fresh and safely held inside.

Compartment and lids - microwave and dishwasher safe.
Locking collar not microwave safe.



Dimensions 19 x 14 x 8.5 (6*) cm 7½ x 5½ x 3½ (2½*) inches *When compact **Capacity** Top 500 ml (17 oz), Base 700 ml (23.7 oz)

GoEat™ space-saving snack pot

This twin-section snack pot allows you to transport pre-prepared snacks from home in separate, leak-proof compartments. Ideal for packed lunches and picnics, it can be used for anything from yoghurt and granola to vegetables and dips. Compartment and lids - microwave and dishwasher safe.

Locking collar not microwave safe.



GoEat™ Snack Pot
Green (81025)
Grey (81026)



Dimensions 8.5 x 8.5 x 12.5 (9.5*) cm 3½ x 3½ x 5 (3¾*) inches *When compact **Capacity** Top 100 ml (3.5 oz), Base 240 ml (8 oz).

SpiceStore™ Carousel

Glass storage jar set with rotating base

Designed by Morph Design registered

This stylish kitchen storage set comprises 10 individual glass jars of various sizes that all stack neatly together on their own rotating carousels. Ideal for storing whole and ground spices.

Made from tough borosilicate glass, all jars have stackable airtight lids that help keep food fresher for longer. The carousel has a non-slip base and a smooth, rotating mechanism, making every jar easily accessible. Fits neatly onto a kitchen worktop or inside a cupboard.

Containers and lids - dishwasher safe.
Base - wipe clean with a damp cloth.

Contents:

2 x 0.2 L jars (6.8 oz)
8 x 85 ml jars (2.9 oz)
Rotating base



SpiceStore™ - White
(81003)



SpiceStore™ - Grey
(81004)



Rotating base



Removeable label tabs in lids

Dimensions 15 x 15 x 21 cm (6 x 6 x 8 inches)



Bamboo lid doubles as a cutting board

Steel Bread Bin with bamboo cutting board lid

Design by Morph
Design registered

A practical storage solution for the modern kitchen, this bread bin is made from tough, powder-coated steel and has a high quality bamboo lid that doubles as a handy cutting board, when flipped. The design features an easy-lift handle and crumb-catching grooves on the bamboo board and non-slip feet on the steel base.

Steel base - wipe clean with a damp cloth.
Bamboo lid - wash by hand and dry immediately.



Easy-lift handle



Crumb-catching grooves



Steel bread bin - White
(80044)



Steel bread bin - Black
(80045)



Dimensions 35.5 x 21.5 x 18 cm (14 x 8½ x 3 inches)

HYDRATION



Dot**Water bottle with counting lid**

Design registered

It's a well-known fact that drinking water and staying hydrated is an important part of enjoying a healthier lifestyle. Many of us acknowledge that we should be drinking more water and this innovative bottle helps you do just that, by tracking how much water you actually drink.

The design features a clever lid that automatically counts every time you tighten it after refilling, showing you the number of bottles drunk with a simple column of dots. Each time you close the lid, a new dot will appear in the display window, allowing you to track up to 4 bottles per day.

By setting yourself a goal to drink a certain number of bottles, Dot provides a simple reminder of what you've achieved and gentle encouragement to reach your goal.

Perfect for use around the home, gym or office, Dot is a smart but simple way of improving hydration. Made from impact-resistant Tritan™, it has a leak-proof cap and is BPA free.

Bottle – dishwasher safe.

Lid – hand wash only.

Available in two sizes: 400 ml and 600 ml.



Lid counts every time you refill
1 dot = 1 bottle



Remove top cap to drink



**HELPS YOU TO DRINK
MORE WATER**



**SUPPORTS A HEALTHY
LIFESTYLE**



**FEEL
MORE ENERGISED**



**MAINTAIN
CONCENTRATION**



Available in two sizes



Perfect for use around the home, office or gym



New convenient compact size



Lid counts every time you close the lid after filling



Dot appears in window

NEW



Dot 400 ml - Turquoise
(81048)

NEW



Dot 400 ml - Green
(81050)

NEW



Dot 400 ml - Pink
(81052)

NEW



Dot 400 ml - Grey
(81054)



Dot 600 ml - Stone
(81047)



Dot 600 ml - Green
(81049)



Dot 600 ml - Pink
(81051)



Dot 600 ml - Grey
(81053)



Dimensions 400ml 7 x 7 x 17.9 cm (2¾ x 2¾ x 7 inches) 600ml 7 x 7 x 23.5 cm (2¾ x 2¾ x 9¼ inches)



Dot disposable countertop merchandiser
Holds 12 - stock not included
(subject to availability)
26 x 36 x 35 cm
(10¼ x 14 x 13¾ inches)
(99094)



Dot disposable floor-standing merchandiser
Holds 60 - stock not included
(subject to availability)
40 x 56.5 x 155 cm
(15¾ x 22¼ x 61 inches)
(99095)

COOKWARE



Nest™ Oven 3-piece non-stick roasting set

Design by Chauhan Studio
Design registered

This striking range of cookware is absolutely perfect for a variety of everyday roasting and baking tasks. Each tin is made from high-quality carbon steel and has a dual-layer non-stick coating, guaranteed for 10 years. They have large easy-pull handles at the front, which makes oven removal safer, and wide side handles for easy carrying.

Like all Nest™ products, their innovative design allows the individual elements of the set to be stacked neatly together, thereby occupying the absolute minimum amount of space when stored.

Suitable for cooking temperatures up to 230°C (450°F)/Gas Mark 8. PFOA-free. Hand wash only.





Easier and safer to remove from the oven



Easy to carry



Serve straight to the table



Space-saving design



Nest™ Oven
(45013)



Dimensions (nested): 37.5 x 25 x 6cm (14¾ x 10 x 2¼ inches)

Internal roasting tin dimensions:

Large	3.7L (125 fl oz)	33 x 21 x 5.5cm (13 x 8¼ x 2¼ inches)
Medium	2.2L (74 fl oz)	27.5 x 16.5 x 5.5cm (10¾ x 6½ x 2¼ inches)
Small	1.2L (40 fl oz)	22.5 x 11.5 x 5.5cm (8¾ x 4½ x 2¼ inches)

M-Cuisine™

Microwave single-serve popcorn maker

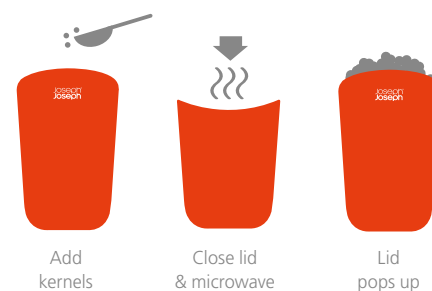
Design registered

This fun popcorn maker allows you to make a single 30g (1 oz) portion in one go, so it should put an end to arguments over who's eaten more than their fair share on film nights. What's more, it's made from high-quality, heat-resistant silicone, so it won't melt with the high temperatures created in the microwave when popping corn. It has an integrated measuring guide in the base and lid flaps that conveniently open when the popped corn is done and reaches the top of the maker. With no oil or butter required, it's a great way to make the perfect healthy snack. Available as a 2-pack.

Dishwasher safe.



M-Cuisine™ 2-pack popcorn makers
(45018)



Dimensions: 11 x 14.9 x 10 cm (4½ x 7½ x 4 inches)



Silicone insert with measuring guide



Shake out any unpopped kernels



Shake to distribute flavourings evenly



Ideal serving bowl

M-Cuisine™

Microwave popcorn maker with kernel-filtering lid

Design registered

One of the most convenient and healthiest ways to make popcorn at home is in your microwave oven as no oil or butter is required. However, the heat created when the popcorn 'pops' can melt many plastic bowls.

Our M-Cuisine™ popcorn maker solves this problem as it has a silicone insert in its base that can withstand the high temperatures involved. It also features a perforated lid that allows you to shake out any unpopped corns that might be left over after cooking. The spherical design allows any added flavourings to be evenly distributed and it makes the perfect serving and sharing bowl.

Dishwasher safe.

M-Cuisine™ popcorn maker
(45015) Box
(45016) Wrap (USA only)



Dimensions: 22 x 22 x 13 cm (8½ x 8½ x 5 inches)

M-Cuisine™ Microwave 4-piece stackable cooking set

Design registered

Flexibility is the key benefit of this stackable microwave cooking set. With its four interchangeable pieces, the versatile design allows you to cook anything from a single food right up to a full meal, ensuring

everything is ready at the same time. Depending on the dish being prepared, the microwave can be paused and a new element with food added to the stack before the cooking process is resumed. The set comprises a main cooking pot for preparing rice, pasta or potatoes; a steamer basket for vegetables, fish or meat; a griddle for cooking foods such as bacon, and a reversible lid which doubles as a base for the griddle and steamer or as a stand-

alone microwave plate. Integrated handles on the cooking pot and lid ensure all pieces can be safely removed from the microwave and carried to the table for serving.

Dishwasher safe.
Cooking guidelines included.



Cooking pot, steamer,
griddle and lid

Cooking pot,
steamer and lid

Cooking pot
with lid



Cook a whole meal in one



Steamer with lid reversed

Griddle

Reversible lid becomes
microwave plate



Dimensions 24.7 x 20 x 17 cm (9¾ x 8 x 6¾ inches)

M-Cuisine™ microwave 4-piece stackable cooking set
(45001)

M-Cuisine™ Microwave rice & grain cooker

Design registered

Go seamlessly from packet to table with this specially designed microwave rice cooker. This thoughtful design provides all the tools necessary to measure, wash, cook and serve perfect fluffy rice and grains. It comprises a large 2-litre (2.1 qt) cooking pot with lid; a colander; a measuring cup, and a multi-purpose rice paddle that simultaneously locks the lid closed for cooking and also provides

two convenient carry handles. To use, simply measure the desired quantity of rice or grains into the colander and then rinse and drain. Place the colander into the cooking pot, add the correct quantity of water and then secure the lid on top using the rice paddle. Fluff the rice or grains with the rice paddle before serving.

Dishwasher safe.

Cooking guidelines included.



Measure portion size



Rinse & drain



Lock & carry



Serve

Suitable for all types
of grains including:



Rice



Oats



Couscous



Quinoa



M-Cuisine™ microwave rice & grain cooker
(45002)

Dimensions 22 x 18 x 14 cm (8½ x 7 x 5½ inches)

M-Cuisine™ Microwave pasta cooker

Design registered

When cooking pasta, reduce the amount of washing up with this clever design that allows you to cook, drain and serve all in one. Simply add pasta to the cooker and cover with water. Microwave for the specified time and then drain quickly and easily using the integrated colander.

The design features a handy portion guide for spaghetti, a water-level indicator for efficient cooking and easy-carry edges.

Dishwasher safe.

Cooking guidelines included.



Spaghetti portion guide in base



Water level guide inside



Integrated colander



Serve straight from the microwave

Suitable for all types of pasta including:



Spaghetti



Penne



Farfalle



M-Cuisine™ microwave pasta cooker
(45003)

Dimensions 29.7 x 14 x 11 cm (11¾ x 5½ x 4¼ inches)

M-Cuisine™ Cool-touch cookware

Design registered



One of the main problems people encounter when heating food in a microwave is that the container used can become very hot. And if this container is unsuitable for the task, it can be dangerous to remove and handle. M-Cuisine™ cool-touch products have been specifically designed to solve this. They have a double-walled construction that ensures the outside surface remains cool after heating,

allowing you to handle them straight from the microwave* - no need for a tea towel or oven gloves. Splash-proof lids with steam vents help reduce mess and their stylish design means they can be taken straight to the table.

*Based on recommended maximum cooking time.



Cool-touch sets



M-Cuisine™
Set of 2 microwave cool-touch bowls
(45005)



M-Cuisine™
Set of 3 microwave cool-touch cookware
(45010)



Set contains:
1 x 2-litre (2.1 qt) bowl
2 x 550 ml (18 oz) dishes

Cool-touch plate

This large plate is perfect for heating ready-meals, leftovers and defrosting foods.



M-Cuisine™
microwave cool-touch plate with lid
26 x 24 x 7 cm (10 x 9½ x 2¾ inches)
(45011)



Cool-touch mugs

These mugs are perfect for heating drinks, soups or stocks and even making mug cakes.



M-Cuisine™
Set of 2 microwave cool-touch mugs
11 x 12.5 x 9 cm (4¼ x 5 x 3½ inches)
(45012)



Cool-touch large bowl

This large 2-litre (2.1 qt) bowl is perfect for heating soups and stews or cooking foods from scratch.



M-Cuisine™
Large microwave cool-touch bowl
22.5 x 21 x 12 cm (8¾ x 8¼ x 4¾ inches)
(45009)



Cool-touch dish and bowl

These are perfect for heating up soups, stews or leftovers.



M-Cuisine™ microwave cool-touch dish
20 x 18.7 x 6 cm (8 x 7½ x 2½ inches)
(45006)

M-Cuisine™ microwave cool-touch bowl
16.5 x 15 x 10 cm (6½ x 6 x 4 inches)
(45004)



M-Cuisine™ Microwave egg poacher

Design registered

Preparing perfect poached eggs in a pan can be a tricky but cooking them in water usually gives the best results.

Now this can be quickly and easily replicated in a microwave oven with this thoughtful design. First, add water to each compartment, then break an egg into each using the integrated egg cracker and then top up with water to the fill line. Cover with the lid and microwave on full power for the specified time.

To serve, simply lift and drain each egg using its individual colander.

Dishwasher safe. Cooking guidelines included.



Eggs poached in water



Integrated egg cracker



Lift, drain and serve with colanders



Delicious poached eggs in minutes



M-Cuisine™ microwave egg poacher
(45008)



Dimensions 23.5 x 10.7 x 6 cm (9¼ x 4¼ x 2½ inches)

M-Cuisine™ Microwave omelette bowl

Design registered

Create a delicious omelette in minutes with this innovative all-in-one preparation and cooking bowl. Simply add the cracked eggs to the bowl and tip it backwards onto its rounded edge, where it balances perfectly. Add any other ingredients and then whisk everything together. Tilt the bowl carefully

back down onto its flat base and then microwave for the required time. Suitable for creating omelettes with a maximum of four eggs.

Dishwasher safe.

Cooking guidelines included.



Prepare and cook in one bowl



Winner - Innovation in Cookware
M-Cuisine range



M-Cuisine™ microwave omelette bowl
(45007)

Dimensions 19 x 14 x 17 cm (7½ x 5½ x 6¾ inches)

UTENSILS



Elevate™ Kitchen Tools with integrated tool rests

Concept by Gillian Westley
Designed by Derek Roberts
Design registered

The Elevate™ range of kitchen tools has been specifically designed to improve hygiene and minimise the mess made by placing utensils onto kitchen surfaces during use. Each tool has an innovative, weighted handle with an integrated tool rest, ensuring that when an Elevate™ utensil is placed down, its head is always raised from the work surface.

The Elevate™ range comprises a variety of essential kitchen tools - including spoons, turners, tongs and spatulas - in a host of materials. Tools with nylon heads are perfect for use with non-stick cookware and are heat-resistant up to 200°C/392°F. Those with silicone heads are heat-resistant up to 270°C/520°F.



Elevate™ Carousel Set

Contains rotating storage stand plus 6 tools:

Slotted Spoon
Spaghetti Server
Solid Spoon
Slotted Turner
Flexible Turner
Ladle

34 x 23 x 23 cm
(13½ x 9 x 9 inches)



Multi-colour
(10118)



Opal
(10141)



Elevate™ Tools Gift Set - Multi-colour
Contains 6 tools:

Slotted Spoon, Spaghetti Server, Solid Spoon,
Slotted Turner, Flexible Turner, Ladle
(10119)



Elevate™ Nylon & Silicone

Nylon tools are available individually or in a variety of sets, which come stylishly boxed, making them an ideal gift. The Elevate™ Carousel Set comprises six tools from the range with a rotating storage stand. Made from tough ABS plastic and with a non-slip rubber base, the carousel is perfect for storing on the kitchen worktop.

Simply twist the top of the unit to rotate for easy tool selection. All Elevate™ Nylon tools come with heat-resistant silicone handles.

Tools - dishwasher safe.

Carousel - wipe clean with a damp cloth.



Elevate™ Spaghetti Server
30 x 7 x 7 cm
(12 x 3 x 3 inches)
(10116)



Elevate™ Slotted Spoon
30 x 7 x 7 cm
(12 x 3 x 3 inches)
(10113)



Elevate™ Solid Spoon
30 x 7 x 7 cm
(12 x 3 x 3 inches)
(10114)



Elevate™ Ladle
30 x 9 x 8 cm
(12 x 3½ x 3 inches)
(10117)



Elevate™ Slotted Turner
30 x 9 x 7 cm
(12 x 3½ x 3 inches)
(10112)



Elevate™ Flexible Turner
30 x 5 x 7 cm
(12 x 2 x 3 inches)
(10115)



Elevate™ Silicone Spatula
27 x 3 x 5 cm
(10½ x 1¼ x 2 inches)
(10132)



Elevate™ Silicone Spoon
27 x 3 x 5.5 cm
(10½ x 1¼ x 2¼ inches)
(10133)



Elevate™ Silicone Cookie Turner
27.5 x 6 x 9 cm
(11 x 2½ x 3½ inches)
(10134)



Elevate™ 3-piece Silicone Baking Tool Set
Gift box **(10131)**
Hanging card (USA only) **(10138)**



Set contains:

Ladle
Flexible Turner
Solid Spoon
Slotted Spoon
Stainless-steel Tongs
Slotted Turner
Carousel



Elevate™ Carousel Set with Tongs

This stylish 6-piece set contains a range of essential kitchen utensils, a pair of lockable stainless-steel tongs with heat-resistant silicone tips and a smart rotating storage stand with a non-slip base. Each utensil features a heat-resistant silicone handle and a tough, Nylon head that's suitable for non-stick cookware.



Elevate™ Carousel set with Tongs
(10151)

Dimensions 23 x 23 x 34 cm (13½ x 9 x 9 inches)

Elevate™ 4-piece kitchen tool sets

These 4-piece sets contain a variety of essential kitchen tools, all with weighted handles and integrated tool rests. Each utensil features a heat-resistant silicone handle and a tough, Nylon head that's suitable for non-stick cookware. Stainless-steel tongs have lockable arms and heat-resistant silicone tips.

All tools dishwasher safe.



Set contains: Stainless-steel Tongs, Slotted Spoon, Solid Spoon, Slotted Turner



Elevate™ 4-piece kitchen tool set with tongs
(10152)



Set contains: Slotted Turner, Solid Spoon, Slotted Spoon, Flexible Turner



Elevate™ 4-piece kitchen tool set
(10157)

Dimensions See page 67



Elevate™ Steel

The Elevate™ Steel Carousel Set features tools with high quality 18/8 stainless-steel heads and ergonomic, heat-resistant silicone handles with colour-coded ends. The set comprises five essential tools plus a rotating storage stand with a non-slip base.

Tools – dishwasher safe.

Carousel – wipe clean with a damp cloth

Tools not suitable for non-stick cookware.



Set comprises five tools:

- Solid Spoon
- Slotted Spoon
- Spaghetti Server
- Slotted Spatula
- Ladle



Elevate™ Steel Carousel Set
(10044)

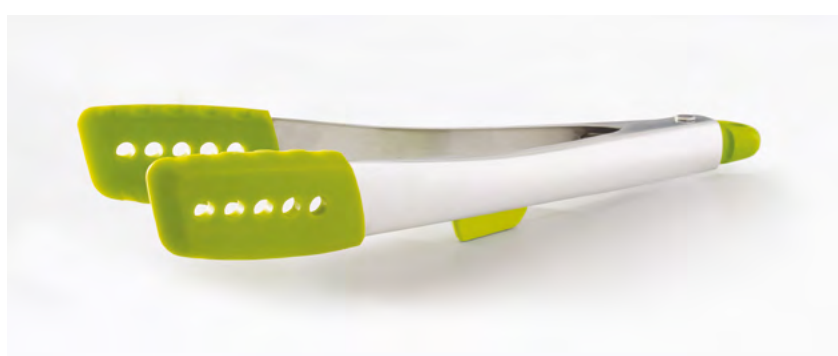
Dimensions

34 x 23 x 23 cm (13½ x 9 x 9 inches)

Elevate™ Steel Tongs

These stylish tongs are made from stainless steel and have heat-resistant silicone heads. They are gently spring-loaded and can be locked and unlocked easily using the end of the handle. The silicone heads are perfect for use with non-stick cookware and are heat resistant up to 270°C/520°F.

Dishwasher safe.

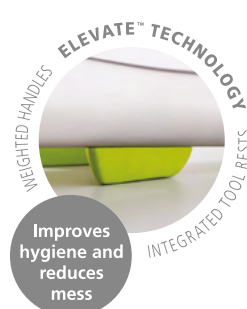


Pull end to lock/unlock tongs



Elevate™ Steel Tongs
(10120)

Dimensions 3.5 x 30 x 4.7 cm (1¼ x 11¾ x 1¾ inches)



Scoop™ Plus Colander

Design by Morph
Design registered

This simple but effective kitchen utensil allows you to scoop, drain and serve food straight from a hot pan or baking tray. It's available in two sizes, both with silicone handles and each with their own individual features.

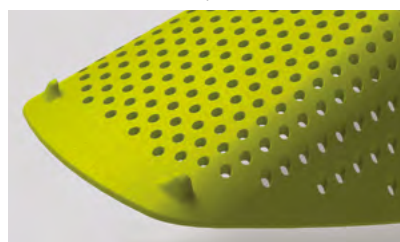
The large version incorporates small pan hooks on the underside of the tool head that allow you to conveniently rest it on

the side of a pan as it drains. The small version has a specially designed front edge that makes it ideal for scraping food from non-stick baking trays. Both sizes are heat resistant up to 200°C/392°F.

Dishwasher safe.



Rests on the side of a pan to drain



Integrated pan hooks



Scoop™ Plus Large - Red
(10064)



Scoop™ Plus Large - Green
(10065)



Scoop™ Plus Large - Black
(10066)



Scoop™ Plus Large - Grey
(10136)

Dimensions 34 x 13 x 5.5 cm (13½ x 5 x 2 inches)

Turner Tongs

Ergonomic silicone tongs

Design registered

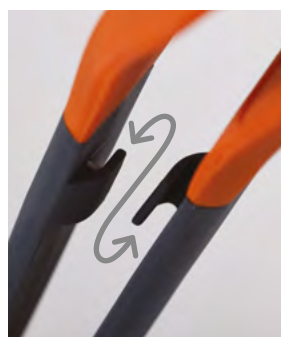
This ergonomic utensil combines the features of conventional kitchen tongs with those of a large flat turner, allowing you to lift and turn even the trickiest foods with ease. The carefully angled arms and wide flat tips are ideal for getting under steaks, burgers and even large fish fillets. Its silicone tips are suitable for use with non-stick cookware and are heat-resistant up to 270°C/520°F. Finally, it has lockable arms for compact storage.

Dishwasher safe.



Turner Tongs
(10142)

Dimensions 30 x 6.5 x 3 cm (11¾ x 2½ x 1 inches)



Lockable arms



Compact when stored

Uni-tool™

The 5-in-1 kitchen utensil

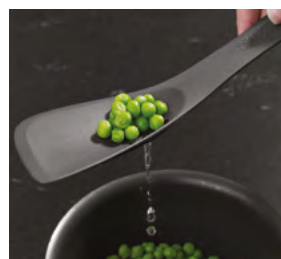
Designed by Derek Roberts
Design registered

If you're tired of searching through the kitchen drawer for the correct utensil, or simply want to reduce clutter, Uni-tool™ is the perfect solution. The ultimate in space-saving design, Uni-tool™ is five utensils in one. Made from tough nylon and silicone, it is safe for use with non-stick cookware and heat-resistant up to 200°C/392°F. Dishwasher safe.



Uni-tool™ - Grey
(UNITG0100SW)

Dimensions 30.3 x 6.8 x 2.2 cm (12 x 2¾ x 1 inches)



1. Slotted spoon



2. Turner



3. Cutting tool



4. Solid spoon



5. Spatula

Nest™ Utensils Plus

Compact kitchen tool set with magnetic storage stand

Designed by Studio17 Design
Design registered



reddot design award
winner 2012

Nest™ is the ultimate collection of practical, space-saving kitchenware comprising a unique range of food preparation sets. Their innovative design allows the individual elements within each set to be stacked together, thereby occupying the absolute minimum amount of space, wherever they are stored.

Nest™ Utensils Plus is the latest update to this range. Comprising five essential kitchen

tools, this innovative design now comes with a separate storage stand which holds any utensils that aren't in use. When nested together, each tool is held securely in place by small magnets in the handles. This colourful set not only looks great, but its compact design eliminates the need for an additional utensil pot.

All utensils are heat-resistant up to 200°C/392°F and are dishwasher safe.



Nest™ Utensils Plus - Opal
(10140)



Nest™ Utensils Plus
(10124)



Dimensions 33 x 11 x 11 cm (13 x 4¼ x 4 inches)

CHOPPING BOARDS



Index™

Hygienic chopping board sets

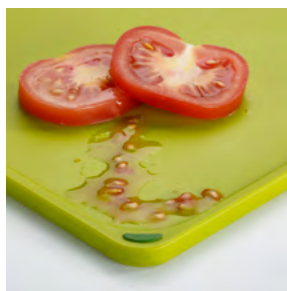
Design by Damian Evans
Design registered

Since its launch in 2008, Index™ has been a worldwide bestseller, helping reduce cross-contamination of food with a simple-yet-effective, colour-coded system of boards. Whilst the original concept has always remained the same, the range has undergone a series of design refinements and product extensions over the years, culminating in this latest range of iconic products.

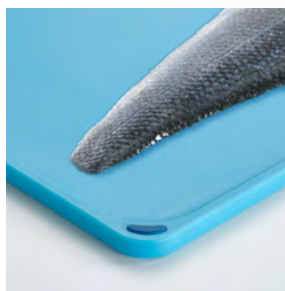
Index™ Compact

Index™ Compact is the latest variant in the range and features the same key benefits of the original, but with a design that is specifically tailored to smaller kitchens. Firstly, the upright case design takes up less room on the worktop and secondly, its open sides mean that the boards can be easily taken out, even when stored underneath cupboards. As before, the knife-friendly boards feature easy-grip tabs with food-type icons, non-slip feet and sloping edges to catch crumbs and liquids. The storage case also has a non-slip base.

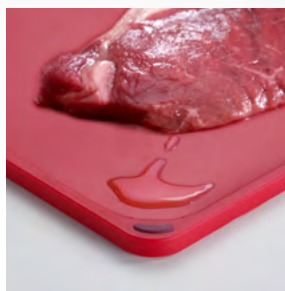
Chopping boards – dishwasher safe.
Storage case – wipe clean with a damp cloth.



Vegetables



Raw fish



Raw meat



Cooked food



Index™ Compact
Silver (60129) Graphite (60130)



Dimensions

Case 7.8 x 20.6 x 31.3 cm (3 x 9 x 12¾ inches)
Boards 28 x 20 cm (11 x 7¾ inches)



Index™ Mini

Index™ Mini's compact size makes it perfect for smaller preparation tasks or space-limited kitchens. These diminutive boards come in an easy-access, space-saving storage case and feature index-style tabs to indicate which food type they should be used for - raw meat, vegetables, fish and cooked food.

All boards have non-slip feet and sloped edges to catch any stray food and juices. Available in silver or graphite case colours. Chopping boards – dishwasher safe. Storage case – wipe clean with a damp cloth.



Index™ Mini
Silver (60097) Graphite (60098)



Dimensions Case 15.5 x 21.5 x 7 cm (6 x 8½ x 2¾ inches) Boards 20.5 x 15 cm (8 x 6 inches)

Index™ Regular & Large

This latest variant features the same key benefits of the original, but with an updated case design. As before, the knife-friendly boards feature easy-grip tabs

with food-type icons, non-slip feet on both sides and sloping edges to catch crumbs and liquids. The storage case also has a non-slip base.

Chopping boards – dishwasher safe.
Storage case – wipe clean with a damp cloth.



Index™ - Silver
(60131)



Index™ - Graphite
(60132)



Index™ - Opal
(60133)



Index™ Large - Silver
(60134)



Index™ Large - Graphite
(60135)

Index™ disposable
floor-standing merchandiser
40 x 35.7 x 160 cm
Holds 16 (stock not included)
4 x Index™ Mini
4 x Index™ Compact
4 x Index™ Regular
4 x Index™ Large
(99213)



Dimensions	Regular	Case 30.5 x 23.3 x 8.3 cm (12 x 9¼ x 3¼ inches)	Boards 30 x 20 cm (12 x 8 inches)
	Large	Case 34.6 x 27.3 x 8.3 cm (13½ x 10¾ x 3¼ inches)	Boards 34 x 24 cm (13¼ x 9¼ inches)

Index™ with knives

Index™ with knives is the most comprehensive set in the range, comprising four colour-coded, non-slip chopping boards plus four co-ordinating knives. Each knife has a tough, stainless-steel blade designed to suit its specific task, an ergonomic handle and is colour-coded to match its corresponding board.

Chopping boards – dishwasher safe.

Knives – wash and dry by hand.

Storage case – wipe clean with a damp cloth.



Index™ with knives
(60096)

Index™ with knives acrylic display case
40 x 36.5 x 16.5 cm
(15¾ x 14½ x 6½ inches)
(Index™ **not** included)
(99931)

Dimensions Case 33 x 23.5 x 8.5 cm (13 x 9¼ x 3¾ inches) Boards 30 x 20 cm (12 x 8 inches)



Index™ Steel

Index™ Steel has a durable, brushed stainless-steel case and four large, colour-coded chopping boards. As well as the iconic tabs, each board includes its own specialised cutting feature: a juice-catching groove on the meat board; a sloping rim for catching food and liquids on the vegetable board; an integrated fish-grip on the raw fish board and crumb-catching grooves on the cooked food board.



Dimensions Case 38 x 25 x 8.5 cm (15 x 10 x 3½ inches) Boards 34 x 24 cm (13½ x 9½ inches)

Index™ - Steel
(60095)

Pop™ Set of 3 chopping mats

Design registered

This colourful set of chopping mats are perfect for a range of food preparation tasks and conveniently snap together for easy storage. Each board has a double-sided, knife-friendly cutting surface and is clearly colour-coded, making it easier to keep specific Planches for specific tasks.

The 'hole' detail is designed to allow the Planches to be joined by simply pushing together, and it also provides the perfect hanging point.

Dishwasher safe.



Boards snap together for compact storage



Pop™
(92104)



Dimensions 24 x 34 x 0.6 cm (16½ x 10¼ x 1 inches)

Nest™ Chop

Set of 3 nesting chopping boards

Design by Donald Wentworth
Design registered

This compact set of chopping boards includes three sizes of board each with a curved profile at one end. The unique design feature provides two useful functions. Firstly it allows the three boards to be neatly stored together as a freestanding unit on a kitchen worktop. Secondly, it creates a handy chute down which chopped food or food waste can be

easily guided. Each board also features a textured, knife-friendly cutting surface and non-slip feet.

Dishwasher safe.



Curved ends guide chopped food into your pan



Boards stand upright for organised storage



Non-slip base



Nest™ Chop - Opal
(60122)

Nest™ Chop - Green
(60121)

Dimensions Small 25 x 18.5 x 3.5 cm (10 x 7¼ x 1¼ inches) Medium 29.5 x 22 x 4.5 cm (11½ x 8½ x 1¾ inches) Large 34 x 25.5 x 5.5 cm (13¼ x 10 x 2¼ inches)

Chop2Pot™ Bamboo

Folding chopping board with non-slip feet

Design registered

Our ever popular Chop2Pot™ folding chopping board design is reimagined using high-quality bamboo. As well as providing a beautiful natural look, the hard-wearing properties of bamboo make it ideal for all types of food preparation tasks.

A single silicone hinge down the middle makes it easy to fold and pour food to a pan, and it features non-slip silicone feet on the base. Available in two sizes.

Wash and dry by hand.



Durable silicone hinge



Tough cutting surface



Chop2Pot™ Bamboo
Small
(60111)



Chop2Pot™ Bamboo
Large
(60112)



Dimensions Small 25.5 x 21 x 1 cm (10 x 8 x ½ inches) Large 32.5 x 27 x 1.5 cm (12¾ x 10½ x ½ inches)

Chop2Pot™

The original folding chopping board

Designed by Mark Sanders. Design registered.

Chop2Pot™ is our original, award-winning folding chopping board. Laid flat, it provides a durable, knife-friendly cutting surface for all types of food preparation. But when the handle is squeezed, the sides of the board fold up, forming a convenient chute down which chopped food or waste can be neatly guided.

This latest version of the design still employs the same proven 'living-hinge' technology to achieve its transformation, but also features a textured cutting surface, comfortable soft-grip handle and non-slip feet. Available in three sizes and a variety of colours.

Dishwasher safe.



Comfortable soft-grip handle and non-slip feet



Chop2Pot™ - Light Blue
Mini **(60104)**
Small **(60103)**
Large **(60102)**

Chop2Pot™ - Grey
Mini **(60101)**
Small **(60100)**
Large **(60099)**

Chop2Pot™ - Green
Mini **(60051)**
Small **(NSG016SW)**
Large **(60043)**

Chop2Pot™ - Red
Mini **(60052)**
Small **(NSR016SW)**
Large **(60042)**

Chop2Pot™ - White
Mini **(60053)**
Small **(NSW016SW)**
Large **(60041)**

Chop2Pot™ - Black
Mini **(60054)**
Small **(NSBL016SW)**
Large **(60040)**



Chop2Pot™ countertop merchandiser
Holds 10 boards. Reusable. Stock not included.
(Large) 40 x 49 x 27 cm (15¾ x 10¾ x 19¼ in)
(99041)

Slice&Sharpen™

Chopping board with integrated knife sharpener

Design registered

Quickly and easily sharpen knives prior to cutting food with this innovative chopping board design. It has a ceramic sharpener built into the surface that allows you to hone the quality of your blades just before you use them. It also features a non-slip rubber edge that ensures the board stays securely in place when sharpening. It also features a knife-friendly cutting surface that will protect the integrity of your knives.

Dishwasher safe.

Sharpener not suitable for serrated or ceramic blades.



High quality ceramic knife sharpeners



Sharpen



Slice



Slice&Sharpen™ Small - Green
(60047)



Slice&Sharpen™ Small - Black
(60060)



Slice&Sharpen™ Small - Red
(60108)



Slice&Sharpen™ Large - Green
(60027)



Slice&Sharpen™ Large - Black
(60028)



Slice&Sharpen™ Large - Red
(60107)



Dimensions Large 37 x 28 x 1 cm (14½ x 11 x ½ inches), Small 30 x 22 x 1 cm (12 x 9 x ½ inches)

Cut&Carve™ Plus

Non-slip, multi-function chopping board

Designed by John Brauer and Joseph Joseph. Design registered.

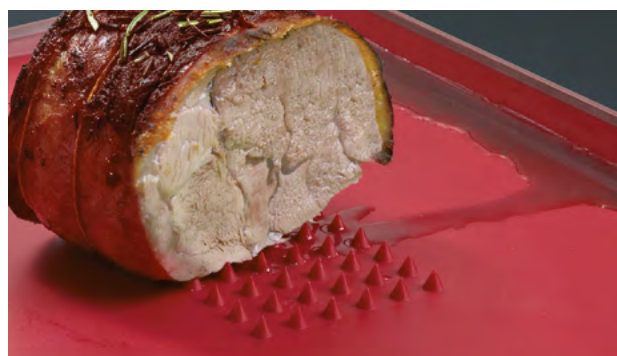
Cut&Carve™ Plus is our popular double-sided, multi-function chopping board. It has an integrated meat grip on one side of the board, angled cutting surfaces and easy-pour corners, which help in the collection and disposal of liquids or food when cutting or carving.

The opposite side of the board provides a smooth cutting surface, for general food preparation, and it also has non-slip feet and soft-grip sides. Available in a range of colours.

Dishwasher safe.



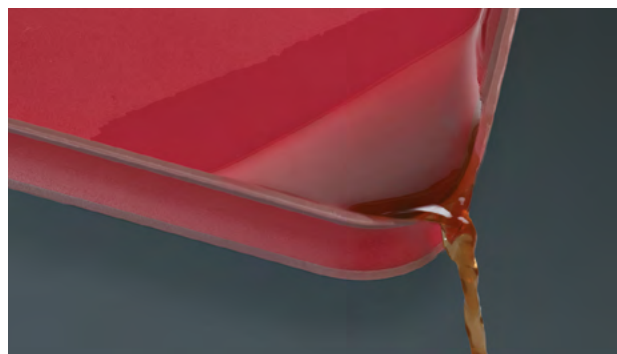
Cut



Carve



Collect



Pour



Cut&Carve™ Plus Large - Green
(60001)



Cut&Carve™ Plus Large - White
(60003)



Cut&Carve™ Large - Grey
(60105)



Countertop merchandiser
Holds 8 Cut & Carve units. Reusable.
45 x 37.5 x 31 cm
(17½ x 11½ x 12 inches)
Stock not included
(99908)



Cut&Carve™ Plus Large - Black
(60002)



Cut&Carve™ Plus Large - Red
(60004)

Dimensions 37.5 x 29.5 x 2.5 cm (14½ x 11½ x 1 inches)

Rinse&Chop™ Plus

Folding, non-slip
chopping board with
integrated colander

Designed by DesignWright
Patent pending

Rinse&Chop™ Plus is the latest version of this hugely popular, folding chopping board, incorporating an improved, curved colander feature and a non-slip base.

When folded and locked, its unique, innovative design creates a small colander at one end enabling food to be rinsed and drained. When opened and laid flat the design becomes a knife-friendly, non-slip chopping board.

Once chopping is complete the board can be folded and locked again to create a convenient chute down which chopped food or waste can be poured. Its non-slip edge prevents the board from sliding if stored upright and the locking hole in the design doubles as a convenient hanging point.

Dishwasher safe.



Fold and lock to rinse



Open and lay flat to chop



Fold and lock to pour



Rinse&Chop™ Plus - Green
(60081)



Rinse&Chop™ Plus - White
(60082)

Dimensions 42 x 26 x 2.5 cm (16½ x 10¼ x 1 inches)



Rinse&Chop™ Plus countertop merchandiser
Holds 12 boards. Reusable. Stock **not** included.
40 x 44 x 28 cm (15¾ x 11 x 17¼ inches)
(MERC3881CB)

WORKTOP SAVERS



Worktop Savers

Multi-purpose boards for preparing and serving food

Made from toughened glass and with non-slip rubber feet, these multi-function boards provide a hygienic, odour - and stain-resistant work surface for all types of food preparation and presentation. In addition they can be used to protect tables and worktops from serving bowls and dishes.

Available in a wide range of designs, they are heat-resistant up to 280°C/536°F, dishwasher safe and carry a lifetime guarantee against breakage.



Prepare



Serve



Protect



Black 30 x 40
(BLAC012AS)



Silver 30 x 40
(SILVE012GB)
Not available in the USA



Clear 30 x 40
(CLEG012GB)
Not available in the USA



Clear 30 x 30
(90109)
Not available in the USA



Clear 40 x 50
(PASC016AS)
Not available in the USA

Dimensions



40 x 30 x 0.7 cm
(16 x 12 x ¼ inches)



30 x 30 x 0.7 cm
(12 x 12 x ¼ inches)



30cm diam. x 0.7 cm
(12 diam. x ¼ inches)



Worktop Saver countertop merchandiser
Holds 12 units
Reusable
Max 40 x 41 x 33 cm
Max (15¾ x 16¼ x 13¼ inches)
(MERC3881CB)



Tomato Vinyl
(90001)



Banana Vinyl
(90002)



Record Player
(90040)



Gold Record
90104



Boombox
(90020)



Cassette
(90021)



The King
(ELV1015AS)



Kitchen Tools
(KITT012AS)



Bottle Tops
(90042)



Colour Blocks
(90074)



Thin Stripes
(THST012AS)



Coloured Rings
(COLR014AS)



Hexagons
(90079)



Mosaic (tutti frutti)
(MOSTF012GB)



Mini Mosaic
(MIMO012AS)



Dimensions



40 x 30 x 0.7 cm
(16 x 12 x ¼ inches)



30 x 30 x 0.7 cm
(12 x 12 x ¼ inches)



30cm diam. x 0.7 cm
(12 diam. x 1/4 inches)

KNIVES & CUTTING



LockBlock™ Self-locking knife block

Design registered

For parents with young children, safety around the home is paramount. And when it comes to sharp kitchen knives many people feel happier hiding these items away in a drawer.

But then the drawer needs to be secured, the blades can be easily damaged and the knives can be dangerous to take out when needed.

LockBlock™, however, provides the perfect solution. The innovative design locks knives safely inside the block and requires an adult-sized hand to operate it, meaning that most children aged 5 and under will be unable to remove any knife*.

As each knife is placed inside a knife slot, its blade is held securely by the unique Cam-lock™ mechanism. Pulling on a knife only increases the force of the grip so knives cannot be simply forced out of the block.

To remove a knife from LockBlock™ the release button, situated on either side for left and right-handed operation, needs to be firmly pressed.



*In tests 96% of children aged 5 and under were unable to remove knives. This product is not a substitute for adult supervision. Always keep knives away from children and never leave a child unattended.

But due to its position and the force required to press it, only someone with an adult-sized hand can do this.

The mechanism inside won't damage expensive knife blades as it has a smooth rubber surface so it holds the knife blade without scratching. LockBlock™ includes a set of 6 high quality knives that are made from Japanese 420J2 stainless steel and

have precision, taper-ground edges for effective use.

These knives are made from Japanese 420J2 stainless steel and have precision, taper-ground edges for effective use. Their ergonomic handles have a textured, non-slip grip and a large bolster to help protect fingers. They are also colour-coded to match their corresponding knife slot.

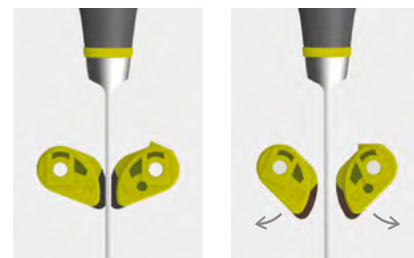
Knives - wash and dry by hand.

Block - wipe clean with a damp cloth.



Dimensions Block 14.3 x 17.5 x 24 cm (5½ x 6¾ x 9½ inches)

Cam-lock™ technology



Locked

Unlocked

LockBlock™ knife set comprises:



LockBlock™ Self-locking knife block with 6 knives - Multi-colour
(10125)

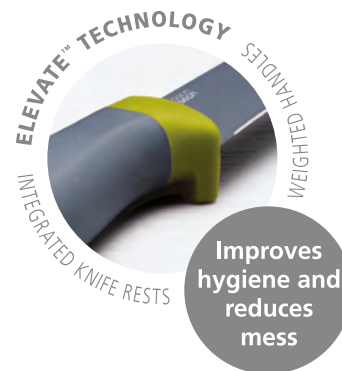
Elevate™ Knives with integrated knife rests

Concept by Gillian Westley
Designed by Derek Roberts
Design registered

The Elevate™ range of kitchen tools has been specifically designed to improve hygiene and minimise the mess made by placing utensils onto kitchen surfaces during use. Each tool has an innovative,

weighted handle with an integrated tool rest, ensuring that when an Elevate™ utensil is placed down, its head is always raised off of the work surface.

Elevate™ Knives are all made from stainless steel and have non-stick, silicone-coated blades and comfortable, ergonomic handles. They are available individually with their own protective storage sheath or as a set of six with a stylish, rotating knife block.



Elevate™ Knives Carousel Set
Dimensions 15 x 37 cm (6 x 14½ inches)
(10077)



Elevate™ Knives Carousel Set includes a sturdy knife block with a non-slip base and universal, magnetic knife slots that hold the knives securely in place when stored. This innovative design means that any Elevate™ knife can be stored in any slot, regardless of blade length.

Knives - wash and dry by hand.
Carousel - wipe clean with a damp cloth.



3 1/2" Paring knife
(10071)



4 1/4" Serrated knife
(10072)



5" Santoku knife
(10073)



6" Chef's knife
(10074)



8" Carving knife
(10075)



8" Bread knife
(10076)



Rotating knife block with magnetic knife slots



3-piece Elevate™ Knife Set -
Multi-colour
(10086)



Hanging packaging includes
protective knife storage sheath



Elevate™ Knives Carousel Set
acrylic display case
(carousel **not** included)
22 x 22 x 40 cm
(8 3/4 x 8 3/4 x 15 3/4 inches)
(99951)

Slice&Sharpen™ Knives

Silicone-coated knives with sharpening sheaths

Design registered

These all-in-one knives have non-stick, silicone-coated blades and come with their own protective storage sheath which includes a built-in ceramic sharpener. This allows you to sharpen the blades just before use, which is both safer and more

efficient. Sheaths have a non-slip base for safe sharpening.

Knives - wash and dry by hand.

Sheaths - wipe clean with a damp cloth.



Sharpen



Protect



3 1/2" Paring knife
21.5 x 1.5 x 3 cm (8 1/2 x 1/2 x 1 inches)
(10145)



5" Santoku knife
26 x 1.5 x 3.5 cm (10 1/4 x 1/2 x 1 1/4 inches)
(10144)



6" Chef's knife
31 x 1.5 x 4.5 cm (12 1/4 x 1/2 x 1 3/4 inches)
(10143)



Set of 2 - 6" Chef's knife, 3 1/2" Paring knife
(10146)

Rota™

Folding knife sharpener and honer

Design by Studio17 Design. Design registered.

The unique, swivelling design of this stylish knife sharpener provides two key features. Firstly, when opened out, it creates a safe, ergonomic handle to hold when sharpening. Then, when finished, the handle folds neatly away again, creating a compact unit that stores easily in a drawer. It has coarse and fine ceramic sharpening wheels for maintaining knives with a variety of blade conditions from dull through to damaged edges. Non-slip feet on the base give added stability.

Suitable for most types of stainless-steel knives. Not suitable for serrated or ceramic blades. Wipe clean with a damp cloth.



Integrated handle and non-slip feet



Folds for compact storage



Push button and rotate to open or close



Rota™ **(10048)**

Dimensions Open 4 x 4 x 19.5 cm (1 3/4 x 1 3/4 x 8 inches) Closed 4 x 4 x 12.5 cm (1 3/4 x 1 3/4 x 5 inches)

CLEANING & ORGANISATION



Surface™ Stainless-steel sinkware

Design registered

This stylish range of sink-side accessories, help organise your space beautifully and include tough, fingerprint proof stainless-steel bodies and non-slip feet. Each item in the range has it's own unique features which are detailed below.



Surface™ Stainless-steel sink tidy small

Keep wet sponges and dish brushes nicely organised with this sturdy, compact sink tidy. The main compartment is divided into two and has room for a scourer and a brush. At the front of the unit there's also space to store a wet sponge, which is held in place by an integrated rail. The ribbed, sloping base ensures any excess water or soap suds collect out of sight inside the unit for draining later.

Wash and dry by hand.

Dimensions 12 x 10.2 x 12.8 cm (4¾ x 4 x 5 in)



Surface™ Stainless-steel sink tidy small
(85111)



Sloped base allows water to drain out of sight



Dismantles for easy cleaning



Sloped base allows water to drain out of sight



Surface™ Stainless-steel sink tidy
(85112)

Surface™ Stainless-steel sink tidy

Keep your whole sink area neatly organised with this really useful sink tidy. The main compartment is divided into two and has ample room for a detergent bottle and a dish brush. At the front of the unit there's space to store a variety of wet sponges or scourers, which are held in place by an integrated rail. The ribbed, sloping base ensures any excess water or soap suds collect out of sight inside the unit for draining later.

Wash and dry by hand.

Dimensions 18 x 12.5 x 12.8 cm (7 x 5 x 5 in)



Separate knife slot area for storing sharp blades



Removable spoon rest


 Surface™ Stainless-steel utensil pot
(85114)

Surface™ Stainless-steel knife & utensil pot

Storing knives and utensils has never been easier with this smart, dual function unit. The main compartment is split into two. One side provides ample room for storing a variety of long-handled kitchen tools and the other side contains a series of slots, providing the perfect area for storing sharp blades. Located at the base of the unit is a removable spoon rest, making this a highly practical design for any kitchen.

Wash and dry by hand.

Dimensions 18 x 20 x 13 cm (8 x 8 x 5 in)

Surface™ Stainless-steel cutlery drainer

Drain and organise your cutlery straight after hand washing with this simple, smart design. Its main compartment is divided into three, which allows you to group similar items together as they dry. It also has a separate, shallower section for storing smaller items such as teaspoons, preventing them from getting lost at the bottom of the unit. Its sloping base allows water to collect inside, out of sight, and it has an integrated spout for emptying.

Wash and dry by hand.

Dimensions 20.2 x 13.5 x 8.4 cm (8 x 5½ x 3½ in)


 Surface™ Stainless-steel cutlery drainer
(85110)


Dismantles for easy cleaning



Integrated spout for emptying drained water



Removeable stainless-steel soap bar



Easy to fill and dismantle for cleaning


 Surface™ Stainless-steel soap pump & bar set
(85113)

Surface™ Stainless-steel soap pump and bar set

This stylish soap pump provides comprehensive hand cleaning and odour removal in one neat design. Firstly, it operates just like a conventional soap pump, dispensing liquid soap by pushing down on the large pump head. However, the stainless-steel top of the pump head is actually a removable soap bar, which can be lifted out and used to help remove strong odours from fingers, often left behind after handling foods such as onion and garlic. The design is easy to fill and also features a drip-catching base and non-slip feet.

Wash and dry by hand.

Dimensions 10.6 x 14.5 x 7.9 cm (4¼ x 5¾ x 3 in)

Y-Rack™ 2-tier self-draining dish rack

Design registered

With draining space at a premium in most kitchens, Y-Rack maximises what's available by utilising the vertical area above your drainer. Its 2-tier design combines a sturdy base for draining pots and pans or cups and bowls, with a traditional-style rack above for draining up to 15 plates. The large self-draining utensil pot that clips onto the side means you can drain everything for 4 full place settings in a very small space. The base features sloping ribs to allow water

to drain freely, a fixed draining spout for emptying into the sink and non-slip feet. The whole unit dismantles for easy cleaning.

Hand wash only.
Assembly instructions included.



Sloping ribs allow water to drain easily and air to circulate



Integrated draining spout



Self-draining cutlery holder



Y-Rack™ - White/Green
(85083)



Y-Rack™ - Grey
(85084)

Dimensions 35.8 x 30.3 x 28.5 (14 x 12 x 11¼ inches)



Extend™ Expandable dishrack with draining plug

Designed by Studio17 Design
Design registered

This versatile dishrack allows you to quickly and easily expand your draining space. When required it can be extended to almost twice its size to accommodate the

washing up after either single- or family-sized meals.

An integrated spout helps to drain away any excess water, but this can be rotated away and closed trapping water inside for draining later. This means that Extend™ can also be used to create draining space almost anywhere. With plated steel prongs and non-scratch tips that make it suitable for all types of glassware and crockery, this

versatile drainer can be extended to create additional draining space that's perfect for cups and bowls.

A moveable cutlery drainer allows for flexible use and non-slip feet to ensure that, wherever it's used, the unit will be secure and stable. The steel rack can be removed for easy cleaning.

Wash and dry by hand.



Draining plug can be closed to trap water



Slide to extend



Extend™ - White/Green
(85071)



Extend™ - Grey/White
(85040)



Dimensions Closed 32 x 36.4 x 16.1 cm (12½ x 14¼ x 6¼ inches) Extended 52.7 x 36.4 x 16.1 cm (20¾ x 14¼ x 6¼ inches)

Connect™ Adjustable 3-piece dishrack

Design by Studio17 Design
Design registered

Made up of three movable components, this highly adaptable drainer can be placed in a number of different ways to make the most of the sink space you have. With widely-spaced spikes that allow for all types of washed items to be dried and an integrated spout that drains excess water, it's perfect for washing up after single or even family-sized meals.

The cutlery holder can be placed anywhere on the rack for maximum convenience, and the non-slip rubber feet will ensure that no matter how you set Connect™ up, it will stay in place.

Hand wash regularly with warm soapy water.



Connect™ - White/Green
(85034)
(85047) USA only



Connect™ - Dark Grey/Grey
(85035)
(85048) USA only



USA only

Dimensions Extended 44.5 x 29 x 10.5 cm (17½ x 11½ x 4 inches)

Flip™ Double-sided draining board

Designed by Studio17 Design
Design registered

This clever, reversible design allows you to drain the washing up virtually anywhere and is perfect for creating additional draining space when required. Both sides of the board have sloping ribs that prevent water being trapped in the mouths of upturned cups and bowls. On one side an integrated spout allows water to be drained directly into the sink, but when the board is flipped the design captures the excess water, trapping it at the opposite end for draining later. Non-slip feet on both sides keep the unit firmly in place on the work surface.

Dishwasher safe.



Flip™
White (85013) Grey (85014)



Drains directly into sink



Flip board over



Captures water for draining later



Dimensions 39.5 x 37 x 3 cm (14¾ x 14¾ x 1¼ inches)

Flume™ Folding draining mat

Design by Studio 17. Design registered.

These handy mats provide a soft rubber surface for draining a variety of items and are perfect for creating extra draining space when required. The distinctive parallel ribs prevent water from being trapped in the upturned mouths of cups, glasses and bowls and help direct water to the central channel, from where it can be easily drained. By simply picking up the corners either side of the central channel, Flume™ will naturally fold allowing water to be gently poured away. Updated for Spring, this new design is easier to clean, provides a flatter surface for draining glassware and now comes in a new larger size for even more draining space.

Hand wash only.



Flume™ Small - Green **(85086)**

Flume™ Large - Green **(85088)**

Flume™ Small - Grey **(85087)**

Flume™ Large - Grey **(85089)**



Soft rubber surface protects crockery and glassware



Folding design makes emptying easier



Dimensions Small 31 x 31 x 1 cm (12¼ x 12¼ x ½ inches)
Large 31 x 43.5 x 1 cm (12¼ x 17 x ½ inches)

Dock™ Cutlery drainer and organiser

Design by DonaldWentworth
Design registered

A cutlery drainer is an essential sink-side item, however they can sometimes be difficult to clean and don't always provide adequate separation for cutlery and sharp knives. Dock™, however, has been designed with both safety and hygiene in mind. The tiered compartments help you to easily separate different items and the dedicated knife slot keeps sharp blades safe and secure. Excess water collects in the draining saucer in the base which has an integrated pouring spout making it convenient to empty. The unit dismantles for easy cleaning.

Dishwasher safe.



Dock™ - Green / White **(85074)**

Dock™ - Grey **(85075)**



Draining saucer with pouring spout



Tiered design separates different types of cutlery whilst draining



Knife-draining slot protects fingers and blades from damage



Dismantles for easy cleaning



Dimensions 12 x 19 x 12.5 cm (4¾ x 7½ x 5 inches)

Caddy™ Sink tidy

Designed by Studio17 Design
Design registered

The washing up has never been so organised, with this highly practical design. The main body of the unit provides ample space for storing a washing-up liquid bottle and brush, and the integrated rail provides hanging and drying space for damp dishcloths. A large draining plate within the base creates a dedicated area for placing wet sponges, and the concealed reservoir beneath the unit collects any drained water ready for disposal. The entire unit can be dismantled for easy cleaning. Available in two sizes.

Dishwasher safe.



Dismantles for easy cleaning

Dimensions

Small 21 x 13 x 11.5 cm (8¼ x 5 x 4½ inches)
Large 30.5 x 13 x 14.2 cm (12 x 5 x 5½ inches)



Caddy™

White/Green (85021)
Dark Grey/Grey (85022)



Caddy™ Large

White/Green (85049)
Dark Grey/Grey (85070)

Sink Aid™ Self-draining sink tidy

Design registered

This stylish design provides organised storage for a variety of washing-up equipment and, because it sits neatly inside the sink, any excess water or soap drains conveniently away. The design incorporates a rubber dish-brush grip, a sponge-draining compartment and a dishcloth hanging-rail. Perfect for where space around the sink is limited, the whole unit can be dismantled for easy cleaning.

Dishwasher safe.



Dismantles for easy cleaning



Attaches securely inside sink



Sink Aid™ - Dark Grey/Grey
(85024)



Dimensions 19.5 x 13.5 x 11 cm (7⅝ x 5¼ x 4⅜ inches)

C-pump™ Single-handed soap dispenser

Designed by Chauhan Studio
Design registered

The unique design of this soap pump means that it can be easily operated with the back of one hand, helping to keep the top of the pump head cleaner and more hygienic. Simply place the hand into the C-shaped opening and press down firmly to dispense soap onto the fingers or into the palm of the hand. The unit has a non-slip base, a soap-level indicator window on the reverse and is easy to fill and clean. Suitable for all types of liquid hand soap.

Wash and dry by hand.



Push down gently with the back of your hand



Dimensions 8.5 x 8.5 x 19 cm (3½ x 3½ x 7½ inches)



Easy to fill



C-pump™
White/Green (85053)
Dark Grey/Grey (85054)

Sink Saver™ Adjustable sink protector

Designed by DonaldWentworth. Design registered.

Protect delicate glassware and crockery with Sink Saver™, a clever two-piece mat that can be placed in the sink in a number of different configurations to fit around your plug position. It comprises two grid-like sections that lock neatly together to create a secure base with a soft rubber surface. It also has raised non-slip feet that allow water to drain away and air to circulate freely.

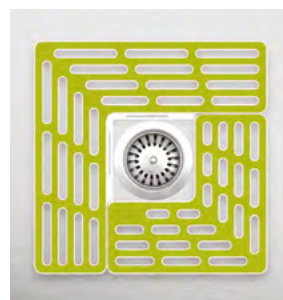
Wash and dry by hand.



Protect delicate glassware and crockery



Adapts to fit different plug positions



Sink Saver™
Green (85036) Grey (85037)

Dimensions 28.5 x 1.5 x 28.5 cm (11¼ x ½ x 11¼ inches)

SinkBase™ Sink tidy sets

Design registered

What better way to de-clutter your sink than with one of these sleek, multi-purpose units. Their clean, slimline design makes full use of the narrow space behind most sinks, without compromising on practical features. The 2-piece set consists of an easy-press soap pump, for hand soaps and lotions, alongside an integrated sink tidy with separate compartments for storing

a brush and sponge. SinkBase™ Plus is a 3-piece set which also includes a squeezezy detergent bottle that can be refilled with your favourite soap liquid. Both units dismantle for easy cleaning.

Hand wash only.



Easy-press soap pump suitable for all liquid and lotions



Squeezezy washing-up liquid bottle



SinkBase™ - White/Green
(85081)



SinkBase™ - Grey
(85090)



SinkBase™ Plus - White/Green
(85082)



SinkBase™ Plus - Grey
(85091)



Dismantles for easy cleaning



Dimensions SinkBase™ 17.5 x 6 x 16.5 cm (6¾ x 2¼ x 6½ inches) SinkBase™ Plus 27 x 6 x 16.5 cm (10½ x 2¼ x 6½ inches)

Soapy-Sponge™

Scouring sponge with soap-dispensing capsule

Design by DonaldWentworth. Design registered.

In order to get a satisfying lather when washing up, liquid soap needs to be added to the sponge repeatedly. This not only results in wasted soap but the bottle also needs to be kept close to hand, creating more clutter around the sink.

Soapy-Sponge™ solves these problems as it contains a refillable soap-dispensing capsule inside that slowly releases the optimum amount of soap liquid as you wash. Simply pop the capsule out of the sponge, fill and replace. The sponge itself also has a triple-layer construction for different cleaning tasks and it comes with its own sponge holder for quick, hygienic drying. After use, remove capsule and rinse sponge in clean water. Scouring side of sponge not suitable for delicate surfaces.



Soapy-Sponge™
Green (85072) Orange (85073)

Contents
3 x sponges,
1 x soap capsule,
1 x sponge holder



Dimensions 7 x 10.5 x 4.5 cm (2¾ x 4 x 1¾ inches)



Fill capsule with soap liquid



Insert capsule into sponge



Squeeze sponge to release soap



Sponge holder for quicker, more hygienic drying



Stainless-steel surface helps remove odour from hands



Press button to dispense soap



Easy to open and refill



SmartBar™

Refillable stainless-steel soap bar with draining mat

Design registered

SmartBar™ takes hand washing to a whole new level with its multi-layer approach to hygiene. Its sleek stainless-steel case not only looks good but also helps remove odour from fingers and hands by attracting the sulphur molecules deposited by foods such as garlic and onions. Unlike other stainless-steel soap bars though, SmartBar™ can also be filled with liquid hand soap meaning you can have thoroughly clean and fragranced hands in one go. Simply fill the unit with liquid soap and then press the silicone button to dispense a small amount into your hands through the non-drip valve at the back of the product. For mess-free storage, SmartBar™ even comes with its own silicone draining mat.

Hand wash only.



SmartBar™
(85085)

Dimensions 11 x 9 x 3.5 cm (4¼ x 3½ x 1¼ inches)



reddot design award
winner 2016

Edge™

Washing-up brushes with integrated sink rests

Designed by DonaldWentworth
Design registered

These distinctive brushes make full use of space around the sink... by conveniently storing inside it! The design incorporates a non-slip resting point that enables each brush to be stored on the inside edge of the sink, thereby saving space and allowing excess water and soap suds to drain neatly away. The dish brush has a non-scratch brush head which is curved to help clean in the corners of trays and an integrated pan scraper for tough food deposits.

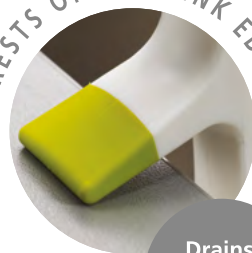
Dishwasher safe.



Non-scratch bristles and pan scraper

Dimensions Edge™ brush 7 x 29 x 5 cm (2¾ x 11½ x 2 inches)

RESTS ON THE SINK EDGE



Drains
directly into
the sink



Edge™ Dish Brush
White/Green (85025)
Dark Grey/Grey (85026)



Palm Scrub™

Soap dispensing washing-up brush with storage stand

Design by DonaldWentworth
Design registered

Streamline your sink with this neat, compact design. This sturdy palm-held washing-up brush features an easy-fill washing-up liquid reservoir that dispenses the required amount of soap with a simple push of the top button. Its compact size makes it easy to control and ideal for cleaning pots, pans and dishes. The brush has its own convenient storage stand that allows it to drip dry hygienically and the whole thing dismantles for easy cleaning.

Wash by hand.



Easy to fill



Push button to release soap liquid



Palm Scrub™ -
Green (85004) Grey (85005)

Dimensions 9 x 9 x 13.5 cm (3½ x 3½ x 5½ inches)

Brush-up™

In-sink brush with suction cup

Design registered

Cleaning glasses and cups is quick and easy with this handy in-sink washing-up brush. Its rounded design and durable bristles make it fast and effective and it features a strong suction cup at its base to ensure it stays firmly in place during use. When required, a small tab on the base makes it easy to remove. Suitable for glassware or crockery up to 14 cm tall.

Wash by hand.



Brush-up™
White/Green (85103)
Grey (85104)

Dimensions 8 x 8 x 16 cm
(3¼ x 3¼ x 6¼ inches)



Strong suction cup with easy-release tab



Fast, effective cleaning of glassware



Wrap-around design



Clean both sides at once



Easy to store

BladeBrush™

Knife and cutlery cleaning brush

Design registered

Cleaning sharp knives and cutlery can be a hazardous task, but with this innovative washing-up brush it's much safer. The unique wrap-around design allows you to clean both sides of a utensil at once, whilst keeping your fingers away from any sharp edges. Its tough bristles quickly remove food debris and the textured grip helps prevent your hand slipping. After use the brush can either be stood on a draining board or placed on the side of a bowl to dry.

Wash by hand.



BladeBrush™
White/Green (85105) Grey (85106)

Dimensions: 8 x 7.5 x 5.5 cm (3¼ x 3 x 2¼ inches)

Wash&Drain™ Plus 3-piece dishwashing and draining set

Design by Morph. Design registered.

This versatile sink set comprises a compact version of our popular Wash&Drain™ washing-up bowl with a removable dishrack and a cutlery pot. The bowl features a plug which allows water to be easily drained away without the need to lift and tip a heavy bowl. The plug can also be set to strain the water for large food particles as it drains. The removable dishrack and cutlery pot can either be used separately on your draining board or inside

the bowl to save space. For convenience, the cutlery pot can also be placed anywhere on the dishrack. Large handles on the bowl make carrying easier and all elements can be stacked together for compact storage.

Wash by hand.



Twist plug to drain or strain water



Versatile 3-piece set



Wash&Drain™ Plus - White/Green
(85101)



Wash&Drain™ Plus - Grey
(85102)



Use dishrack and cutlery pot inside bowl to save space

Dimensions 37.5 x 24 x 20 cm (14¾ x 9½ x 7¾ inches)

Wash&Drain™ Dishwashing bowl with straining plug

Designed by Morph. Design registered.



This basic piece of kitchen equipment is given a stylish and practical update with this smart, thoughtful design. It has an integrated plug which means water can be quickly drained away, eliminating the problem of lifting and emptying a heavy bowl. The plug can also be set to strain the water for food particles, allowing them to be easily disposed of and helping to prevent sink blockages.

Its steep sides help keep water and soapsuds safely inside and large carry handles mean it can be easily carried, if required. Perfect for use in the sink or for washing dishes anywhere.

Hand wash only.



Simply twist plug to drain or strain water



Easy to carry



Wash&Drain™ - White
(85055)



Wash&Drain™ - Grey
(85056)



Wash&Drain™ - Green
(85059)



Dimensions 31 x 30 x 20 cm (12¼ x 12 x 8 inches)

Easy-Tear™

Kitchen roll holder with tearing blade

Design by Goodwin Hartshorn. Design registered.

This innovative product makes the task of tearing off paper towels much easier, particularly one handed. The design incorporates an upright tearing blade that provides a convenient edge against which to tear and its heavyweight, non-slip base provides added stability and excellent resistance when each sheet is pulled. Its self-adjusting mechanism fits a variety of kitchen roll sizes and ensures the roll is always held securely in place no matter how many sheets are left. The top of the tearing blade also provides a convenient carrying point, so the unit can be easily transported to wherever paper towels are required.

Wipe clean with a damp cloth.



Align perforations against upright tearing blade and pull firmly



Easy to move and carry



Self-adjusting mechanism holds roll firmly in place



Easy-Tear™
White/Green **(85051)**
Dark Grey/Grey **(85052)**

Dimensions
17.5 x 17.5 x 3 cm
(7 x 7 x 10 inches)

DrawerStore™

Expandable cutlery tray

Designed by Studio17 Design. Design registered.



Silver Award

Organise messy cutlery drawers with this practical and smart storage solution. The two halves of the tray can be finely adjusted to fit a variety of drawer sizes and lock securely together once in place.

The design provides four deep-sided compartments for holding cutlery, a utensil area for knives or larger kitchen tools and a handy, moveable storage dish for small, loose items. Fits a wide range of drawer sizes from 29 cm (11.4") up to 48 cm (18.9").

Hand wash only.



DrawerStore™ Cutlery Tray -
White/Green
(85041)



DrawerStore™ Cutlery Tray -
Dark Grey/Grey
(85042)



Dimensions Closed 36.5 x 28.3 x 5.5 cm (14¼ x 11⅛ x 2⅛ inches) Expanded 36.5 x 48 x 5.5 cm (14¼ x 18⅞ x 2⅛ inches)

INTELLIGENT WASTE







Totem 60

Waste separation and recycling unit

Design by PearsonLloyd. Design registered.

Totem 60 combines all your waste and recycling requirements in one stylish unit, whilst taking up the same amount of space as a conventional kitchen bin.

It has a 36-litre (9.5 US gallon) general waste compartment at the top, which has a removable inner bucket that takes custom-fit liners or standard bin liners. The bucket includes liner-retaining holes, to prevent messy bag overhang, and breather vents that make removing a full liner easier. A carbon filter inside the lid helps eliminate odours and saves you emptying a half-full bag just because of the smell.

At the base of the unit is a multi-purpose drawer. Offering flexible use, this comes with a removable divider that's perfect for separating different types of recycling and features specially designed hooks that allow you to fix two standard carrier bags inside. Alternatively, custom-fit liners are available for a perfect fit.

Totem 60 also features a removable food waste caddy. This can be stored on a kitchen worktop, in the general waste compartment or in the multi-purpose drawer - whichever suits you best. Custom-fit compostable liners are available as well, which fit neatly inside with no untidy overhang. The caddy is also available separately.

10-year guarantee. Welcome pack with full instructions and trial-pack of liners/odour filters included.

Total capacity: 60L (15.8 US Gallons)



Food waste caddy



Removable inner bucket



Breather holes



Bag



Sort



Divide



Store



Removable drawer bucket



Carrier bag hooks



All Totem models feature a 24-litre multi-purpose drawer

Totem 48

Waste separation and recycling unit

Design by PearsonLloyd. Design registered.

Totem 48 provides the perfect solution for households requiring less capacity. It features a 24-litre (6.3 US gallon) general waste compartment plus a multi-purpose drawer with divider. Like Totem 60, the respective inner buckets are removable, take custom-fit liners (IW1) and feature liner-retaining holes, breather vents and carrier bag hooks. It also has a fingerprint proof stainless-steel lid with odour filter and a powder-coated steel body.

10-year guarantee. Welcome pack with full instructions and trial-pack of liners/odour filters included. Total capacity: 48L (12.6 US Gallons). Food waste caddy available separately.



Totem 58

Recycling separation unit

Design by PearsonLloyd. Design registered.

Totem 58 brings an alternative configuration to the Totem range, providing additional choice and flexibility. Instead of a single space for waste at the top, it has a split, recycling compartment, with two removable inner buckets inside. These also take custom-fit liners (IW3) or standard bin liners and feature liner-retaining holes and breather vents as before.

With the multi-purpose drawer and divider at the base, Totem 58 provides plenty of space for separating different types of recycling, such as paper, plastic and glass. Like other Totem products, it also has a fingerprint proof stainless-steel lid with odour filter and a powder-coated steel body.

10-year guarantee. Welcome pack with full instructions and trial-pack of liners/odour filters included. Total capacity: 58L (15.3 US Gallons). Food waste caddy available separately.



Totem 60S Stainless-steel & 60 (Stone & Graphite)
80 x 40 x 30 cm (31¼ x 15¾ x 11¾ inches)
Stainless-steel (30022) Stone (30001) Graphite (30002)



Totem 48
66 x 40 x 30 cm (26 x 15¾ x 11¾ inches)
Stone (30019) Graphite (30020)



Totem 58
80 x 40 x 30 cm (31¼ x 15¾ x 11¾ inches)
Stone (30021) Graphite (30025)

Totem 4

Food waste caddy

Design by PearsonLloyd. Design registered.

This handy caddy allows you to collect and dispose of your food waste with ease. It has an easy-clean polypropylene body, a sturdy stainless-steel carry handle and a clever lid that stores conveniently on the side whilst filling, thereby improving hygiene. A bag-retaining ring inside ensures any liners stay in place and eliminates untidy bag overhang.

Perfect for storing on a kitchen worktop, it is also compatible with Totem waste separation and recycling units. Custom-fit, compostable liners (IW2) are available separately for the perfect fit.

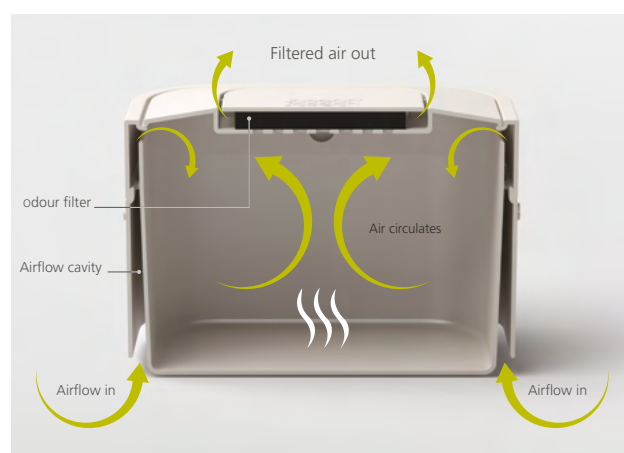
Total capacity: 4L (1 US Gallon).
Wash by hand with hot, soapy water.



Totem 4
15.5 x 24.5 x 14 cm
(6 x 9½ x 5½ inches)
(30024)



Store on the worktop. Also compatible with Stack recycling separation units.



Ventilated design reduces moisture and odours



Stack 4
Stone **(30015)** Graphite **(30016)**

Dimensions 23 x 20 x 16 cm (9 x 7¾ x 6¼ inches)

Stack 4

Food waste caddy with odour filter

Design by PearsonLloyd. Design registered.

This clever caddy has been carefully designed to help reduce the smell from collected food waste. It has a unique, ventilated design that allows air to enter and circulate inside the caddy, which helps to reduce moisture - the main cause of unpleasant odours from decomposing food.

In addition, it features a replaceable odour filter in the lid that works in tandem with the fresh air to help trap any smells that do occur. It has an easy-clean polypropylene body, a flip-top lid and a sturdy stainless-steel carry handle. A liner-retaining hole inside ensures any liners stay in place and the rim of the removable lid hides any untidy bag overhang. Perfect for storing on a kitchen worktop, it is also compatible with our Stack recycling separation system. Custom-fit, compostable liners (IW2) are available separately for the perfect fit.

Total capacity: 4L (1 US Gallon).
Wash by hand with hot, soapy water.



Flip-top lid



Replaceable odour filter



Stainless-steel handle

Stack 4 cardboard countertop merchandiser (disposable) (subject to availability - stock **not** included)
30 x 28 x 30 cm
(11¾ x 19¾ x 11¾ in)
(99067)



Stack Recycling separation system

Design by PearsonLloyd. Design registered.

When it comes to pre-sorting recycling at home, many people improvise using additional bags or boxes. But these are often unsuitable and only create more domestic clutter. The Stack recycling separation system provides the perfect solution to this growing problem.

It consists of individual modular units that can either be stacked neatly on top of each other or placed side-by-side, depending on the space you have available. Each unit has a sliding lid to hide messy recycling, a removable inner bucket for easy emptying and colour-coded tabs to help identify recycling types.

The unique, slimline design allows access to all compartments when stacked and blends discretely into kitchens and utility rooms. The inner buckets take custom-fit liners (IW1) but also have liner-retaining holes, if using standard bin liners. Stack is available as a single unit and as 2-piece set. For additional functionality, there's also a 3-piece set that includes a food waste caddy with an odour filter.

Wash by hand with hot, soapy water.



Modular, versatile system adapts to suit available space and recycling requirements



Sliding lids hide recycling



Stack 48 - Stone
79 x 22.5 x 44 cm
(31 x 8¾ x 17¼ inches)
(30012)



Stack 52 - Stone
94 x 23.5 x 44 cm
(37 x 9¼ x 17¼ inches)
(30017)



Colour-coded lid tabs

IntelligentWaste™ Accessories



IW1
Extra strong custom-fit liners
Capacity: 24-36 litres
(6.3 - 9.5 US gallons)
Dispenser pack size: 20
20.5 x 32 x 3 cm
(8 x 12½ x 1 inches)
(30006)



IW2
Extra strong custom-fit
food waste caddy liners
Capacity: 4-litres (1 US gal.)
Dispenser pack size: 50
100% Compostable
14.5 x 36 x 2 cm
(5¾ x 14 x ¾ inches)
(30007)



IW3
Extra strong
custom-fit liners
Capacity: 17 litres
(4.5 US gallons)
Dispenser pack size: 20
20.5 x 32 x 3 cm
(8 x 12½ x 1 inches)
(30026)



Replacement odour filters
Pack size: 2
11 x 17 x 2 cm
(4¼ x 6½ x ¾ inches)
(30005)

IntelligentWaste™ Merchandising Units



Totem metal triangular
floor-standing merchandiser
(subject to availability -
stock **not** included)
147 x 127 x 150 cm (57¾ x
50 x 59 inches)
(97027) Kit code



Totem metal floor-standing
merchandiser
(subject to availability
- stock **not** included)
50 x 50 x 150 cm
(19¾ x 19¾ x 59 inches)
(99064) Kit code

Stack 4 cardboard countertop
merchandiser (disposable)
(subject to availability
- stock **not** included)
30 x 28 x 30 cm
(11¾ x 19¾ x 11¾ inches)
(99067)



IntelligentWaste™ accessories
metal floor-standing merchandiser
(subject to availability
- stock **not** included)
40 x 35 x 150 cm
(15¾ x 13¾ x 59 inches)
(99066)

Stack metal floor-standing
merchandiser
(subject to availability
- stock **not** included)
40 x 50 x 150 cm
(15¾ x 19¾ x 59 inches)
(99068)



MERCHANDISERS & GIFT SETS



Merchandisers & POS

Convenient, countertop and free-standing merchandising units are available for many of our products. Disposable countertop units are made from high-quality, laminated card and are supplied fully stocked with the colours indicated.

Reusable and free-standing units are made from powder-coated steel and can be replenished with stock as required.

See our price list for more details (conditions apply).



Joseph Joseph logo Small
10 x 4 x 3 cm
(4 x 1½ x 1 inches)
Green (**LOGOG011SW**)
Pink (**LOGOP011SW**)

Joseph Joseph logo Large
18 x 7 x 4 cm
(7 x 2¾ x 1½ inches)
Green (**99961**)
Pink (**99962**)

Disposable countertop units



Nest™ Glass disposable countertop unit
Stock not included.
Subject to availability
25W x 36D x 23H
(10 x 14¼ x 9¼ inches)
(**99223**)
(**99234**) *USA only*



Spiro™ disposable countertop unit
Holds 8 - Stock not included
Subject to availability
37 x 34 x 40 cm
(14½ x 13½ x 15¾ inches)
(**99214**)



Dot disposable countertop merchandiser
Holds 12
Stock not included
Subject to availability
26 x 36 x 35 cm
(10¼ x 14 x 13¾ inches)
(**99094**)



Stretch™
Contains 12 units
(6 Green, 6 Black)
20 x 20 x 14 cm
(7¾ x 7¾ x 5½ inches)
(**70036**)



Surface™ free-standing disposable POS card
9.9 x 5 x 21 cm (4 x 2 x 8¼ inches)
Subject to availability
(**99212**)

POS displays



Index™ with knives acrylic display case
(Index™ **not** included)
40 x 16.5 x 36.5 cm
(15¾ x 6½ x 14¼ inches)
(**99931**)



Elevate™ Knives Carousel Set acrylic display case
(carousel **not** included)
22 x 22 x 40 cm
(8¾ x 8¾ x 15¾ inches)
(**99951**)

Reusable countertop units



Suitable for the following products:
Shake-it™, Whiskle™, Handi-Grate™, Rocker™, Scroll™, & Shred-Line™ (stock **not** included)
41.5 x 37.5 x 27.5 cm (16½ x 14¾ x 10¾ inches)
Stand (**99899**)



Chop2Pot™/Worktop Savers/Rinse&Chop™
Holds 12 units
(stock **not** included)
Max 40 x 41 x 33 cm
(15¾ x 16¼ x 13¼ inches)
(**MERC3881CB**)



Countertop merchandiser
Holds 8 units
Reusable
(stock **not** included)
45 x 37.5 x 31 cm
(17½ x 11½ x 12 inches)
(**99908**)

Free-standing merchandising units



Index™ disposable floor-standing merchandiser
40 x 35.7 x 160 cm
Holds 16 - Stock not included
4 x Index™ Mini
4 x Index™ Compact
4 x Index™ Regular
4 x Index™ Large
(99213)



Dot disposable floor-standing merchandiser
Holds 60 - stock not included
(subject to availability)
40 x 56.5 x 155 cm
(15¾ x 22¼ x 61 inches)
(99095)



Large floor-standing merchandisers
(conditions apply)
170 x 63.6 x 70 cm (67 x 25 x 27½ inches)
Cleaning & Organisation **(99043)** Kit code
Best Sellers **(99042)** Kit code



Stack 4 cardboard countertop merchandiser
(disposable)
(subject to availability - stock **not** included)
30 x 28 x 30 cm
(11¾ x 19¾ x 11¾ inches)
(99067)



IntelligentWaste™ Merchandising Units



Totem metal triangular floor-standing merchandiser
(subject to availability - stock **not** included)
147 x 127 x 150 cm (57¾ x 50 x 59 inches)
(97027) Kit code



Totem metal floor-standing merchandiser
(subject to availability - stock **not** included)
50 x 50 x 150 cm
(19¾ x 19¾ x 59 inches)
(99064) Kit code



Stack metal floor-standing merchandiser
(subject to availability - stock **not** included)
40 x 50 x 150 cm
(15¾ x 19¾ x 59 inches)
(99068)



IntelligentWaste™ accessories metal floor-standing merchandiser
(subject to availability - stock **not** included)
40 x 35 x 150 cm
(15¾ x 13¾ x 59 inches)
(99066)

Gift Sets

Comprehensive sets that combine some of our most innovative products in one giftable package. For more details see individual product pages.



The Peeling Perfectionist

3-piece peeling gift set

Julienne Peeler (p.12)
Y-shaped Peeler (p.12)
Serrated Peeler (p.12)

(98220)

The Brilliant Baker

12-piece baking gift set

Nest™ Measure 8-piece measuring cup set (p.37)
Nest™ Mix 4-piece mixing bowl set
with egg yolk separator (p.37)

(98195)

The Foodie

4-piece gadget and utensil gift set

Scoop Plus™ colander small
Twist Grater™ adjustable 2-in-1 grater (p.11)
Multi-peel™ multi-function peeler (p.12)
Elevate™ stainless-steel tongs (p.69)

(98194)



The Entertainer

2-piece entertaining set

Disc Easy-clean pizza wheel (p.14)
BarWise™ One-pull waiter's friend (p.26)

(98247)

The Complete Carving Set

2-piece carving gift set

Duo™ Carve knife and fork carving set
Cut&Carve™ Plus Large multi-function
chopping board - Black (p.83)

(98169)

We are proud to have won the following awards:



Joint Winner - Emerging Entrepreneur of the Year



Winner 2014 - TriScale™



Winner 2016 Innovation Award - M-Cuisine
Winner 2015 Housewares - Totem
Winner 2015 Innovation Award - Totem
Winner 2014 Innovation Award
Winner 2013 Innovation Award
Winner 2013 - Wash&Drain™
Winner 2012 Innovation Award
Winner 2011 Innovation Award
Winner 2009 Innovation Award
Winner 2009 - Nest 8™
Winner 2008 Cutting Edge Award - Index™



Winner 2012 - Nest™ 9 Plus
Highly Commended 2012 - Arena™
Winner 2011 - Pie™
Highly Commended 2011 - Rocker™
Winner 2010 - Hands On™
Highly Commended 2010 - Y-Grinder™
Winner 2008 - Index™



reddot design award
best of the best

Winner 2015 - Totem
Winner 2011 - Pie™



reddot design award

Winner 2016 - Dial™
Winner 2016 - SmartBar™
Winner 2015 - Twist Grater
Winner 2014 - Edge™ Dish Brush
Honourable Mention 2013 - TriScale™
Winner 2012 - Twist™
Winner 2012 - Nest Utensils™
Winner 2010 - Y-Grinder™
Honourable Mention 2010 - Hands On™
Winner 2009 - Nest 8™
Winner 2008 - Folding Colander

DESIGN PLUS

Winner 2011 - Pie™
Winner 2010 - Y-Grinder™
Winner 2010 - Hands On™
Winner 2009 - Nest 8™



Winner 2015
Winner 2014
Winner 2013
Winner 2012
Winner 2011



Winner Gold 2013 - TriScale™
Winner Silver 2013 - DrawerStore™ Cutlery Tray



Winner 2012 - No-spill Mill™



Winner 2009 Kitchenware - Nest 8™
Winner 2009 Food Preparation - Folding Colander



Winner 'Prix' 2015 - Totem
Winner 'Grand Prix' 2015 - Totem



Winner 2016 - Totem



Winner 2016

Contact us

UK

Trade customer enquiries and ordering

sales@josephjoseph.com

General account enquiries

accounts@josephjoseph.com

General enquiries

info@josephjoseph.com

Press enquiries

pr@josephjoseph.com

Joseph Joseph Ltd.
The Grove
30 Great Guildford Street
London, SE1 0HS
United Kingdom

Tel: +44 (0)20 7261 1800

info@josephjoseph.com

www.josephjoseph.com

USA

Trade customer ordering and press enquiries

customercare@josephjoseph.com

Joseph Joseph Inc.
41 Madison Avenue,
15th Floor
New York
NY 10010

Tel: +1 917 338 0900

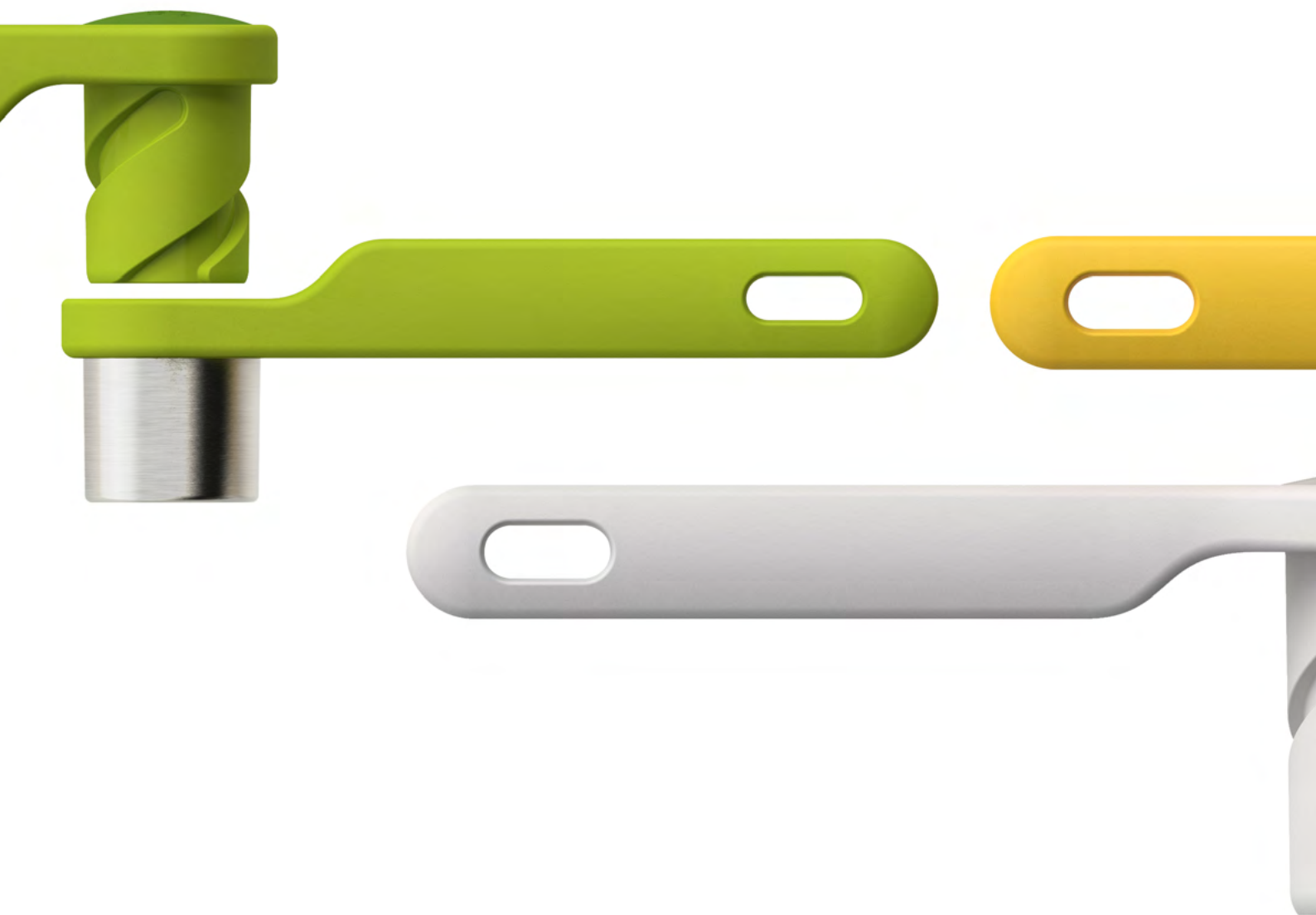
Fax: +1 917 338 0912

customercare@josephjoseph.com

www.josephjoseph.com

All product images and specifications are based upon current information. Joseph Joseph reserves the right to make changes from time to time, without notice or obligation, to specifications, colours or materials and to change or discontinue models. Some products or features may not be available in all markets.

Photography by Charlie Bettinson and Steve Wakeham.



Joseph Joseph Ltd.
The Grove
30 Great Guildford Street
London SE1 0HS
United Kingdom
Tel: +44 (0)207 261 1800
info@josephjoseph.com

Joseph Joseph Inc.
41 Madison Avenue
15th Floor
New York
NY 10010
Tel: 917 338 0900
customercare@josephjoseph.com

www.josephjoseph.com